

ACCESSING SHARES VIA FTP

FTP (file transfer protocol) is used to transfer files from one computer to another via the local network or the internet. This protocol allows you to exchange files with your colleagues, clients, or business partners securely, as only people with a user account will have access. For a detailed explanation of the benefits of using FTP, see <http://en.wikipedia.org/wiki/FTP>.

The FTP service is disabled by default but you can enable it on the **Dashboard > General Settings** page (see [General Settings](#)).

Once FTP is enabled, your LaCie NAS can be accessed using an internet browser or FTP client software. FTP client software is very helpful if you wish to share, download, and upload data within a dedicated application rather than an internet browser. Examples of FTP client software include [Filezilla](#) and [Cyberduck](#).

LOCAL FTP ACCESS

To use the FTP service on your local network, enter your LaCie NAS's IP address or device name in the FTP client's address field or in an internet browser's address field. Your LaCie NAS's IP address is available on the **Dashboard > Network** page or [LaCie Network Assistant](#).

Public Access Folders (non-password protected):

ftp://[IP-address] (For example, ftp://192.168.10.149)

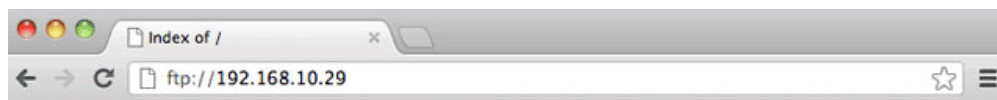
ftp://[machine name]/ (For example, ftp://lacie-5big-pro/ or ftp://lacie-5big-pro.local/)

Private Access Folders (password protected):





When following the directions below, usernames and passwords can vary depending upon the user. For example, the administrator's username and password are not the same as another user's name and password.

ftp://[username:password@IP-address] (For example, ftp://admin:adminpassword@192.168.10.149)

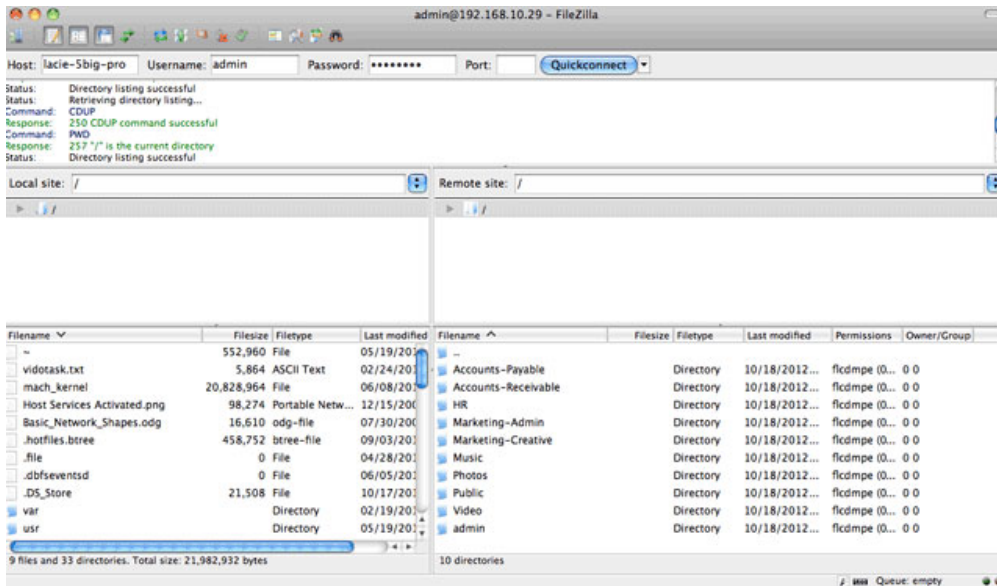
ftp://[username:password@machine name]/ (For example, ftp://admin:adminpassword@lacie-5big-pro/ or ftp://admin:adminpassword@lacie-5big-pro.local/)



Index of /

Name	Size	Date Modified
 Music/		10/18/12 9:14:00 AM
 Photos/		10/18/12 9:14:00 AM
 Public/		10/18/12 9:14:00 AM
 Video/		10/18/12 9:14:00 AM

Access files via FTP using an internet browser



Access files via third-party FTP applications

REMOTE FTP ACCESS

You can access and share your LaCie NAS's files from a computer outside of your home network. To gain access using FTP, you will need to know your router's public IP address.

1. From a computer on the same local network as the LaCie NAS, visit this page: <http://www.whatismyip.com/>.
2. Note your public IP address.
3. Launch an internet browser or FTP client software.
4. Within the internet browser or FTP client's address field, type:
 - Public folders only: ftp://[Public IP-address] (For example, ftp://94.10.72.149)
 - Public and private folders: ftp://[username:password@Public IP-address] (For example, ftp://admin:adminpassword@94.10.72.149)

For further information on the public IP address for your router, see your router's user manual or your internet service provider.

SFTP

SFTP is a secure version of the FTP service. Data is more secure when using SFTP but transfer rates are slower. Similar to FTP, SFTP is disabled by default but you can enable it on the **Dashboard > General Settings** page (see [General Settings](#)).

Note on Network Backup Server and SFTP: Activating Network Backup server will disable SFTP (see [Backup](#) for details).