

# CREATING SHORTCUTS TO SHARES

Once you successfully set up your LaCie NAS, you can create shortcuts so you can quickly access stored files. You can do this by using your operating system or LaCie Network Assistant.

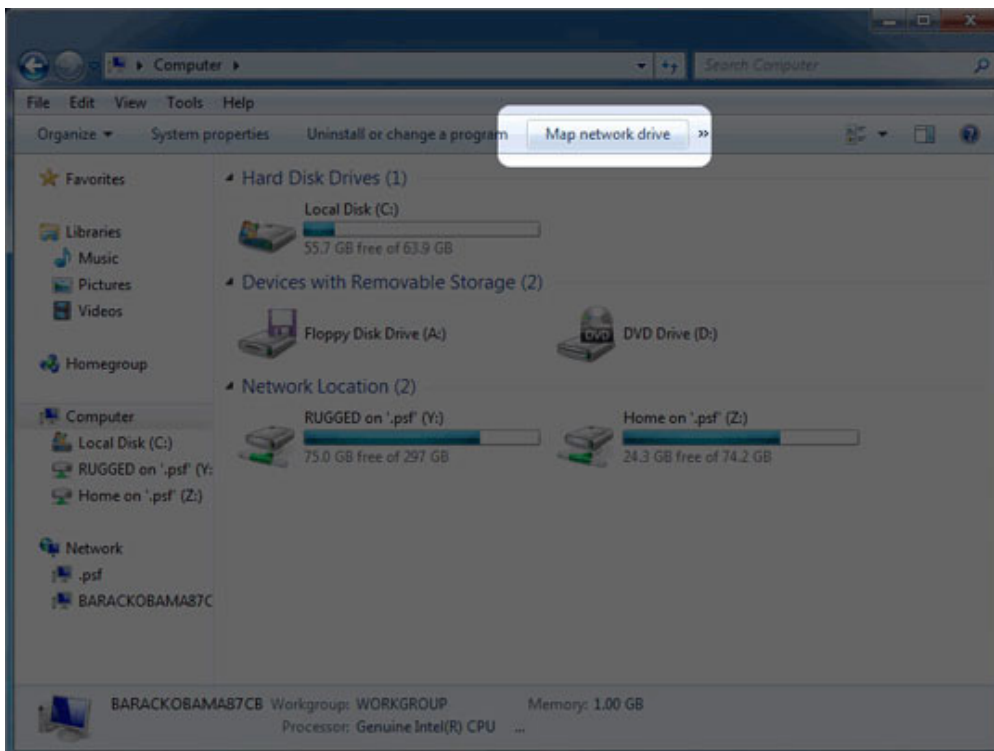
## CREATE SHORTCUT USING LACIE NETWORK ASSISTANT

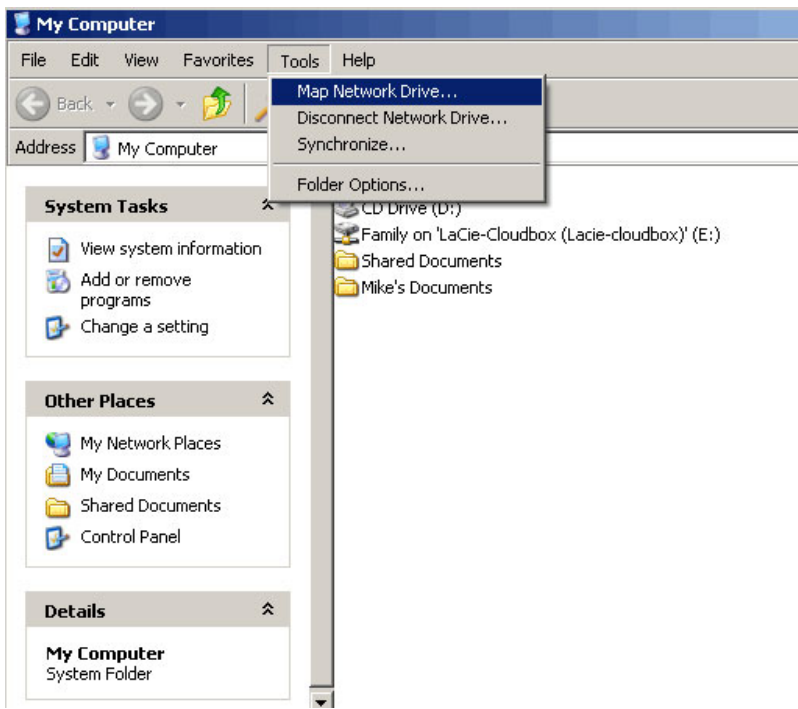
LaCie Network Assistant can be configured to automatically mount shares on your computer, which allows you quick access to the files they store. See [Auto-Mount](#) for details.

## CREATE A SHORTCUT USING THE OPERATING SYSTEM

### Windows XP, Vista, and Windows 7

1. From an Explorer window in Windows XP, select **Tools > Map Network Drive**. For Windows Vista and Windows 7, open an Explorer window, navigate to **Computer**, and choose **Map Network Drive**.

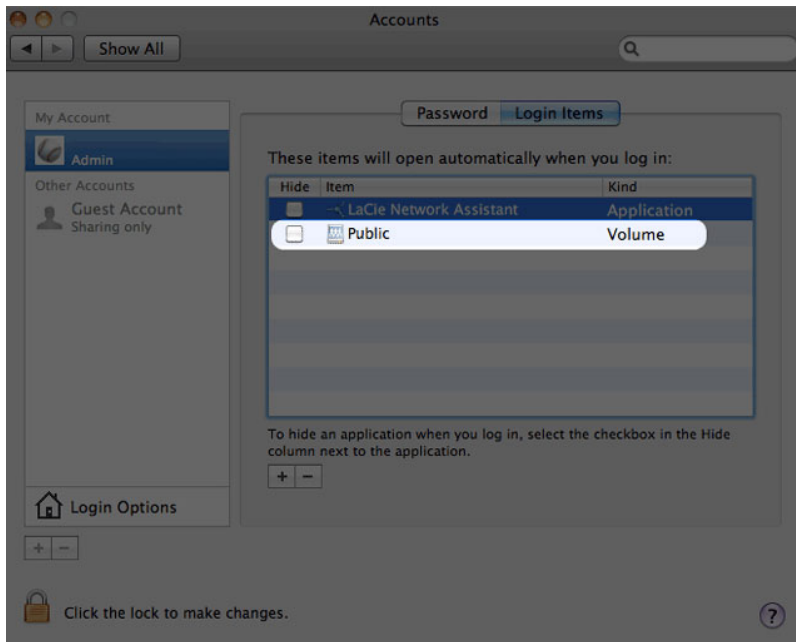




2. Browse to and select the share you wish to auto mount.
3. Windows will offer the option to mount the share each time you log on to the computer.
4. Repeat steps 1-3 for other shares.

## Mac

1. Open a new Finder window. On the left of the window, navigate to **Shared > [machine name] > [share]**. If prompted, type in your username and password and click **Connect**.
2. Repeat step 1 for each share.
3. To mount the share automatically each time you log on to you computer:
  1. From the Apple icon in the menu bar, select **System Preferences > Accounts > Login Items**.
  2. Choose the "+" sign to add a new item to the list and browse for the share. Please note that the shares must be mounted in order to add them to the list.



When you log on to the Mac OS, the share(s) will automatically mount on your desktop. If the shares do not mount, check your Finder preferences to confirm that the system will display connected servers on your desktop.