

CONNECT TO THE NETWORK: DISKLESS LACIE 5BIG NAS PRO

Users who purchased a LaCie 5big NAS Pro enclosure without hard disks should follow the instructions below.

Enclosure with hard disks: If you purchased an enclosure with hard disks, see [Connect to the Network](#) for instructions on how to connect to your network.

CHOOSE COMPATIBLE HARD DRIVES

Review the following before adding hard drives to your LaCie 5big NAS Pro:

- When adding new hard drives to the enclosure, consider [LaCie 5big Hard Drives](#). LaCie hard drives are specially prepared and optimized for use with LaCie NAS.
- LaCie NAS are compatible with most SATA II and SATA III hard drives. Go to [Network Hard Drives](#) for a list of hard drives tested with the 5big NAS Pro. If you have any issues with hard drive compatibility and LaCie products, please contact our tech support.

INSTALLATION STEPS

Step 1: Update the LaCie USB key

The included USB flash drive allows you to boot the LaCie 5big NAS Pro and run the NAS OS Rescue and Install (LaCie key). However, before running the Rescue and Install, it is highly recommended that you download a more recent version of the software as it may have been updated since you received your NAS.



The software that you download onto the LaCie key NAS is not the NAS OS. Rather, it is a utility to run the NAS OS Rescue and Install so that you can install or repair the NAS OS.

To update the LaCie key:

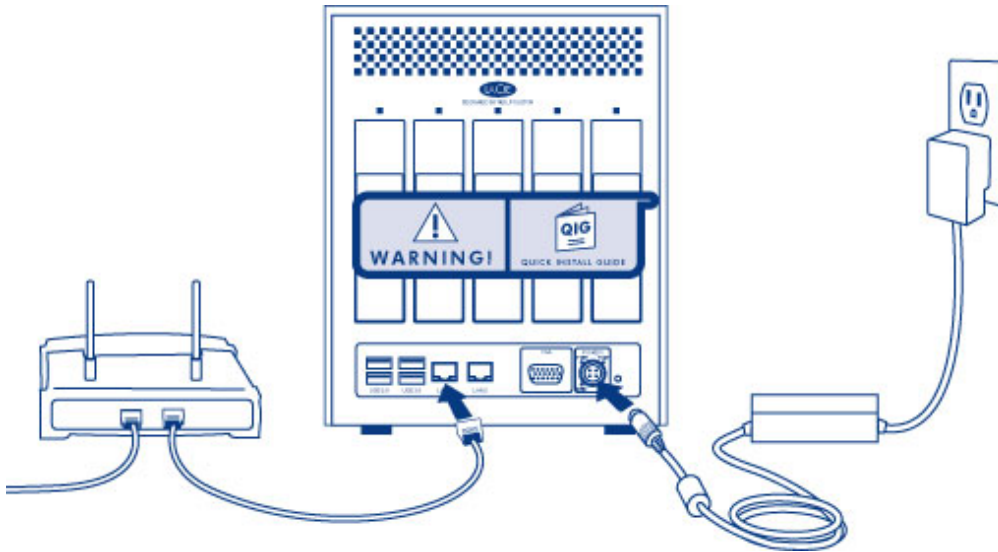
1. Insert it into a USB port on a computer with a connection to the internet.
2. Launch an internet browser and enter the following address: <http://www.lacie.com/lakeynas>
3. Follow the onscreen directions to update the software on the LaCie key.
4. Eject the key from your computer.



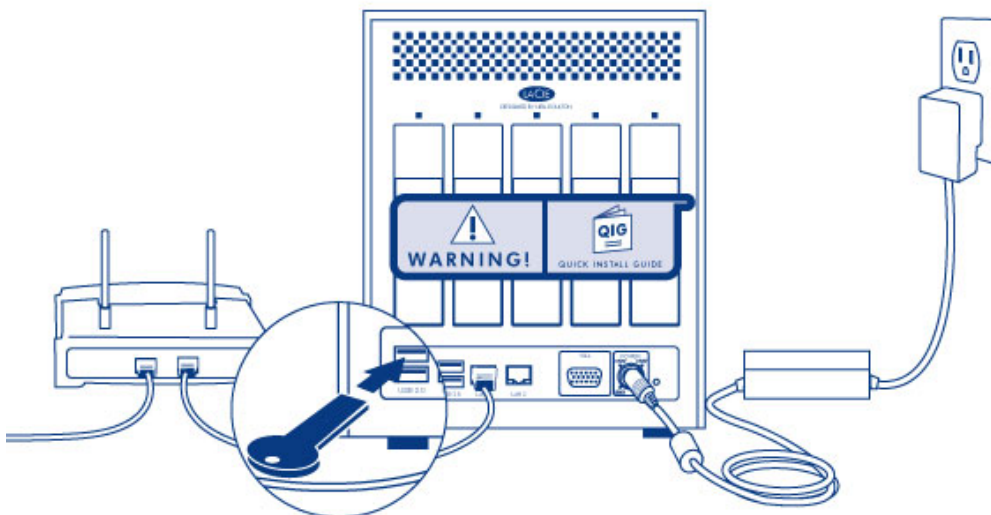
In Step 5 below, the setup wizard will ask you to enter a MAC address unique to your enclosure. You can get a MAC address by:

- looking on the bottom of your LaCie 5big NAS Pro enclosure for a sticker. It has two numbers that correspond to **LAN 1** and **LAN 2**. Use one of the two numbers as the MAC address.
- connecting a VGA monitor to the VGA port located on the back of the LaCie 5big NAS Pro. Following the initial boot process (Step 3), the system will provide the MAC and IP addresses. If the monitor is receiving a signal but the image is black, try connecting a USB keyboard to one of the USB ports also located on the back of the 5big NAS Pro. The system may have reverted to energy conservation mode which you can exit by striking one of the keys on the USB keyboard.

Step 2: Connect the Ethernet cable, power cable, and LaCie key



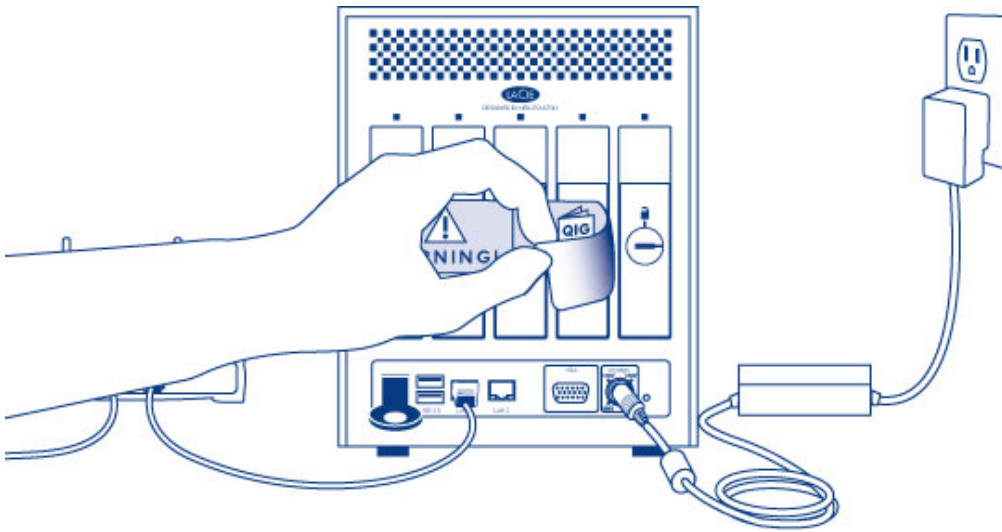
1. Connect the Ethernet cable to the Ethernet port on the back of the product and to an available Ethernet port on your router. Refer to your router's documentation if necessary.
2. Connect the power supply to a wall outlet and to the product.
3. Connect the LaCie key to one of the USB ports on the LaCie 5big NAS Pro.



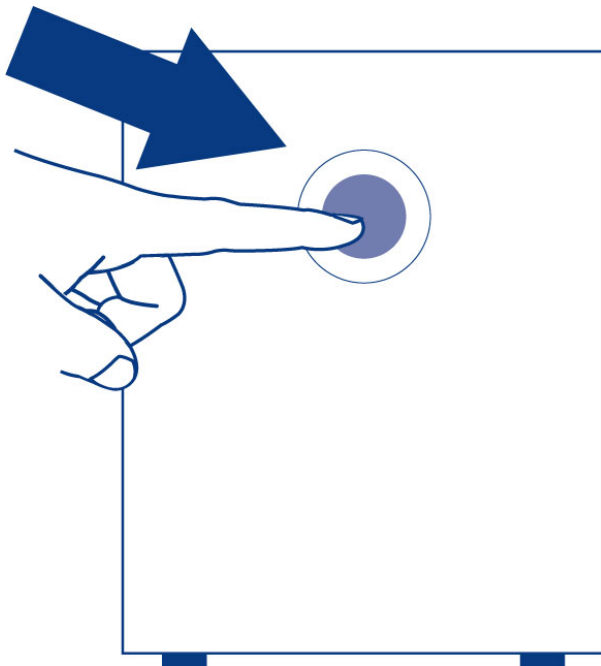
Caution: Only use the AC adapter supplied with your specific LaCie device. Do not use a power supply from another LaCie device or another manufacturer. Using any other power cable or power supply may cause damage to the device and void your warranty. Always remove the AC adapter before transporting your LaCie device. Failure to remove the adapter may result in damage and will void your warranty.

Step 3: Remove the sticker and power on the 5big NAS Pro

1. Remove the sticker on the back of the enclosure.



2. Press the front LED button to power on the device.



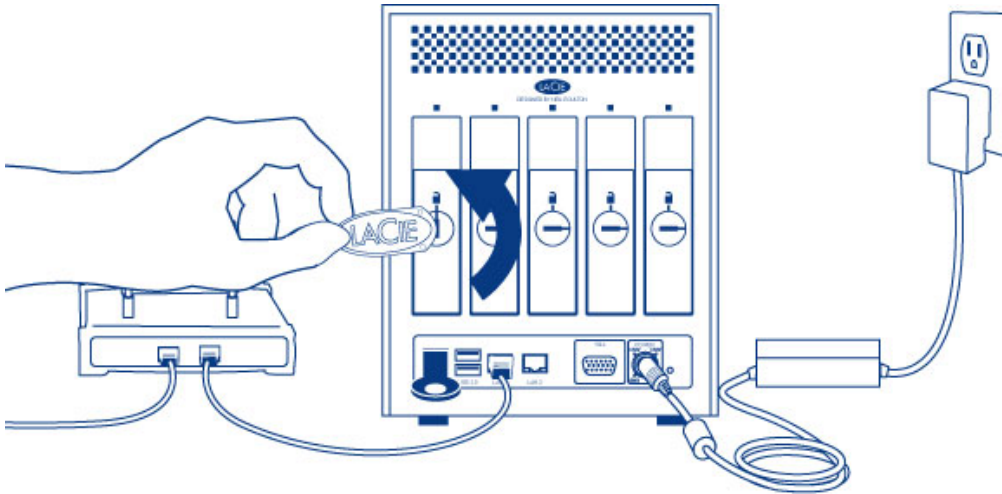
Important info: Power the device on before inserting hard disks into the drive slots.

Step 4: Install hard drives into the enclosure

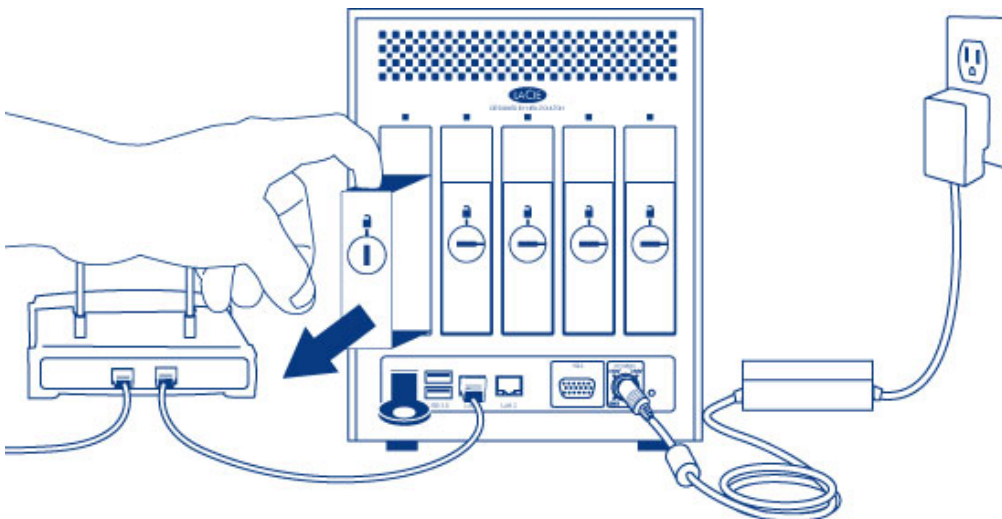
Add new hard drives in the order of the numbered slots, from left to right.

Remove the empty disk trays:

1. Use the included drawer key to unlock the disk tray. Turn the lock until it is vertical.



2. Place your index finger into the space behind the handle then carefully remove the disk tray.



3. Remove additional trays if you are adding more than one hard disk. Make certain to remove the disk trays in the proper slot order.

Fasten the hard drive to the hard disk tray:

Find a suitable work area with adequate space and a flat, even surface. Make certain that all necessary components are available:

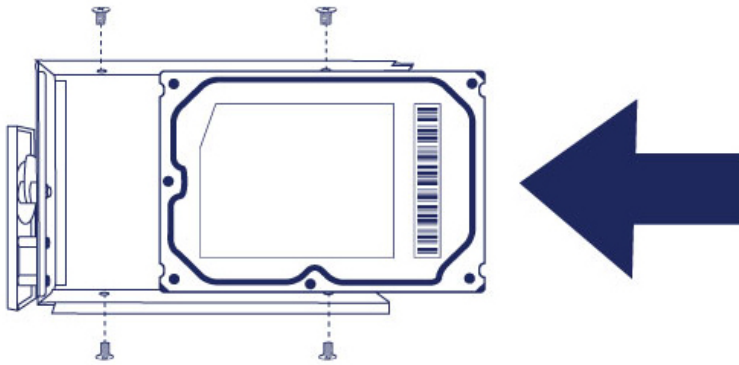
- LaCie 5big NAS Pro Hard Disk Tray
- Hard drive
- Hard disk tray screws. Use only the screws that are provided with your LaCie NAS.
- Phillips head screwdriver. Confirm that the head of the screwdriver is the proper size for the disk tray screws.

Secure a hard drive to the hard disk tray:

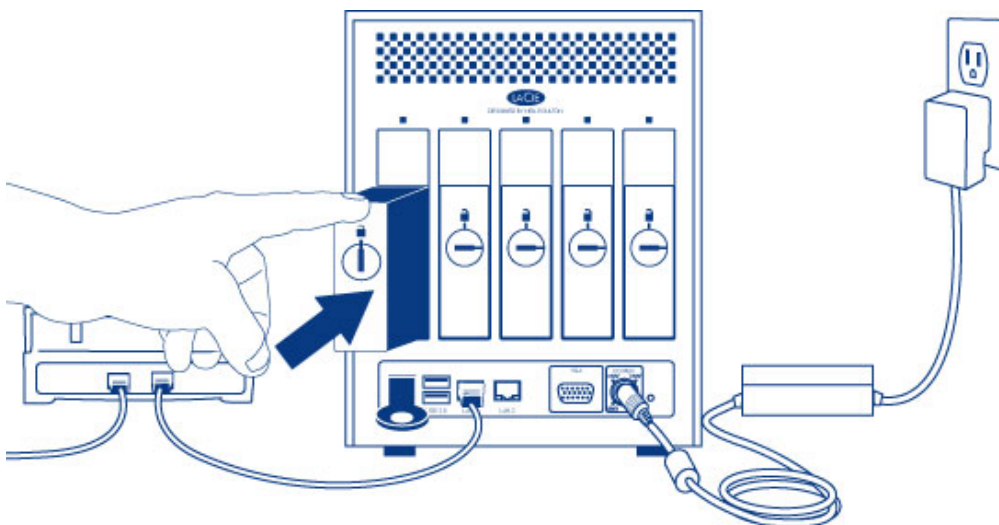
1. Place the empty hard drive tray onto the flat work area with the handle on the bottom left.
2. Many hard disks have a label on one side and the printed circuit board on the opposite side. With its label

side facing up, gently place the hard disk within the hard drive tray. Keep the side with the printed circuit board on the work space and the SATA connector facing to the right. The four tray screw slots should align with the hard disk's four screw holes.

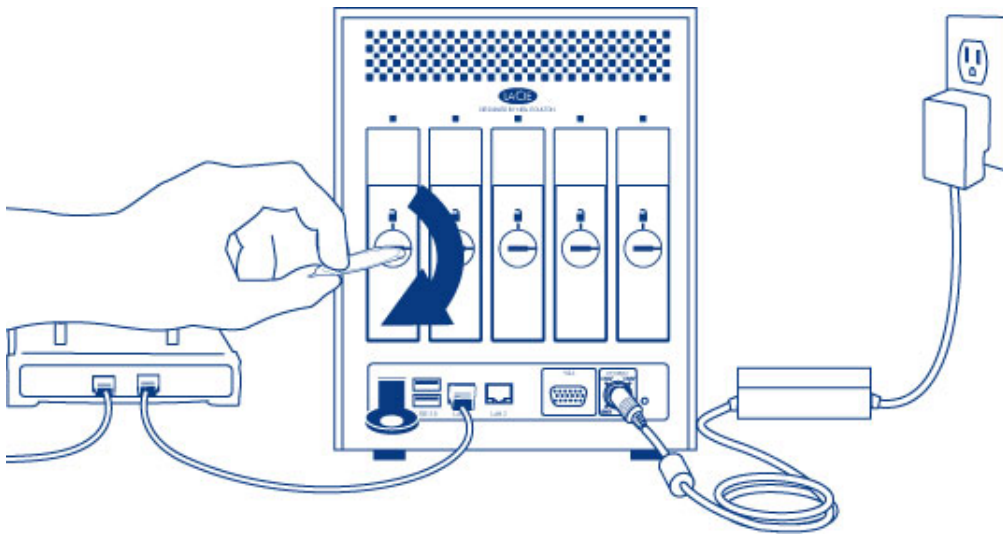
3. Use the Phillips head screwdriver to fasten all four screws into the four tray slots. Do not overly tighten the screws. Doing so can affect the integrity of the screw holes on the hard drive as well as the threads on the screws.



4. Repeat the process if you are adding more than one hard disk.
5. Carefully insert the full hard drive tray into the empty disk slot 1 (far left). You will feel resistance when the hard drive tray is most of the way in the bay. Gently push the hard drive tray handle firmly until you feel it snap into place.



6. Once the disk tray handle is flush with the back of the enclosure, you can lock it.



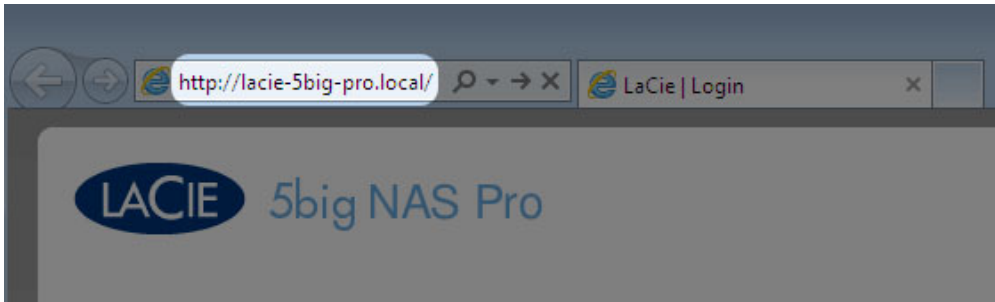
7. If you are adding more than one hard disk, insert full hard drive trays into empty slots in the enclosure. Make certain to follow the slot numbers. For example, the second hard disk should be inserted into disk slot 2, the third disk into disk slot 3, etc.

Step 5: Install LaCie NAS OS

Note: The steps below should be completed by the NAS's administrator.

Perform the steps below on a PC/Mac connected to the same network as your LaCie 5big NAS Pro. During this process, **the hard disks you have inserted into the 5big NAS Pro will be formatted and all data deleted.**

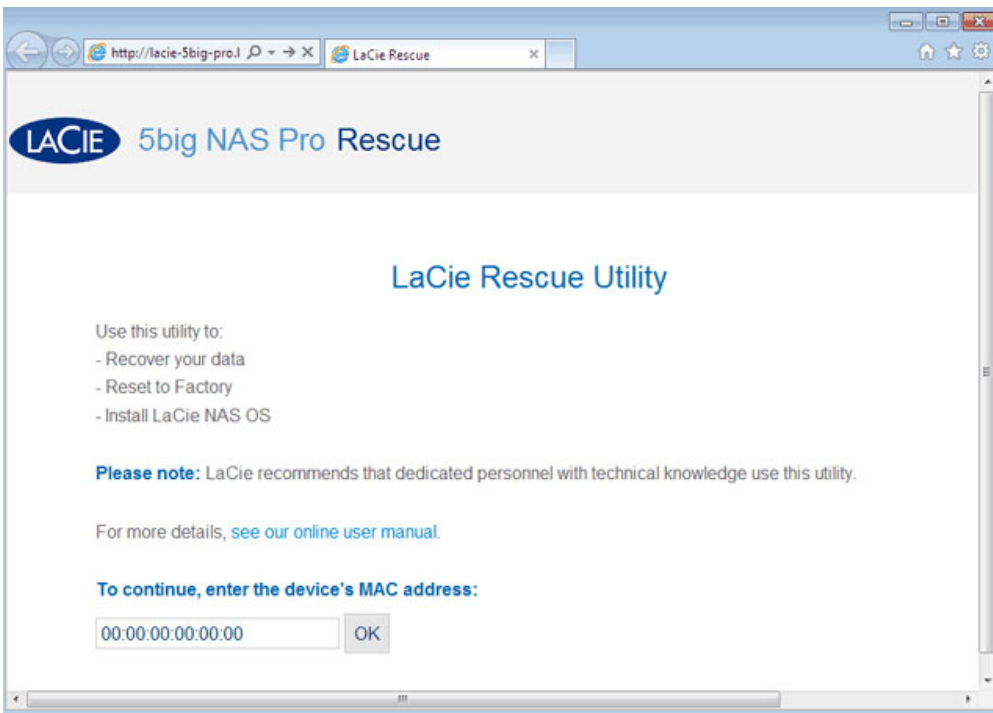
1. Launch your preferred internet browser and type the default address for the LaCie NAS:
 - *Windows workstations (no Bonjour)* - <http://lacie-5big-pro>
 - *Mac OS X and Windows workstations running Bonjour* - <http://lacie-5big-pro.local>.



If you cannot reach the setup wizard using the name of the device, connect a VGA monitor to the VGA port located on the back of the 5big NAS Pro. Following the initial boot process, the system will indicate MAC and IP addresses.

If the monitor is receiving a signal but the image is black, try connecting a USB keyboard to one of the USB ports on the back of the device. The system may have reverted to energy conservation mode which you can exit by striking one of the keys on the USB keyboard.

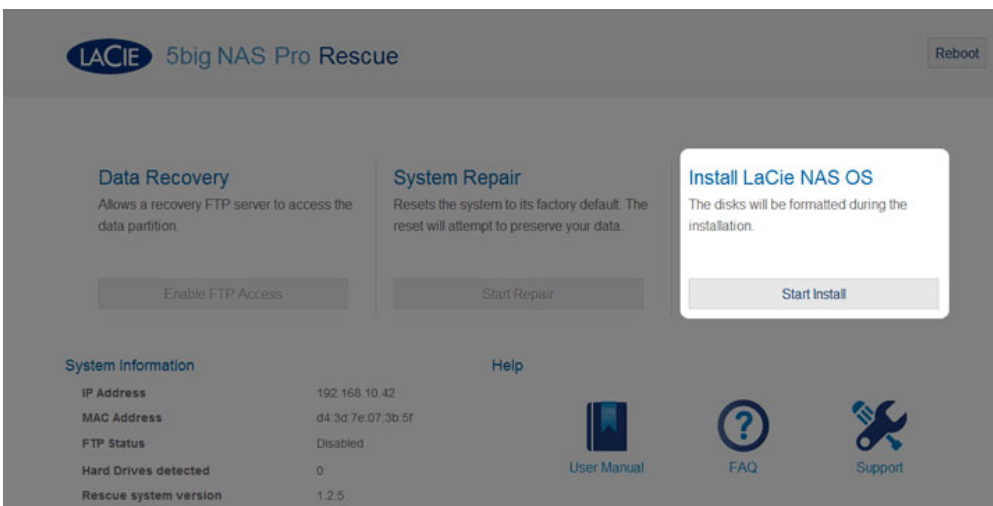
2. The LaCie 5big NAS Pro Rescue wizard will appear.



3. To continue, enter one of the MAC addresses that you noted in Step 1. It is not necessary to enter the colons.

To continue, enter the device's MAC address:

4. Choose **Start Install**.



5. Choose **Continue** at the prompt to install LaCie NAS OS on the hard disk(s). To accommodate the installation, **all data stored on the hard disks will be deleted.**

Install NAS OS

The new disk(s) will be formatted.

⚠ All data will be deleted during the disk format.

6. It will take approximately five minutes to format the hard drive(s) and install LaCie NAS OS. Once it is finished, the Dashboard will prompt you to create an administrator password. You may also change:

- The name of the device (the default name is *LaCie-5big-Pro*).
- The administrator login (the default login is *admin*).
- The time zone.



1. Update 2. Settings

Authentication

Product name
To identify your 5big Pro NAS on your local network.

Administrator login

Password

Confirm your password

Timezone

(GMT+01:00) Brussels, Copenhagen, Madrid, Paris
(GMT+01:00) Sarajevo, Skopje, Warsaw, Zagreb

All Time Zones

(GMT+12:00) Eniwetok, Kwajalein
(GMT-11:00) Samoa Standard Time; Midway Is.
(GMT-10:00) Hawaii Standard Time
(GMT-09:00) Alaska Standard Time
(GMT-08:00) Pacific Time (US & Canada); Tijuana

7. Make certain to note your login and password for future use.

8. Choose **Finish** to access the Dashboard Home page. You may remove the LaCie key from the device. Keep it in a safe location for future use.

Dashboard

- General Settings
- Users
- Shares
- Backup
- Drive Information
- Eco Management
- Network
- Groups
- External ports
- Download
- RAID
- Support

Users X
1 User
In 0 Groups

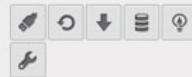
Groups X
0 Group
For 0 Users

Shares X
3 Shares
2 Public Shares

General Settings X
LaCie-5big-Pro
On Workgroup
9:15
15:1

Network X
IP Address: 192.168.10.42
Direct Internet connection:
Remote Access:
Automatic port forwarding:

Drive Information X
Network drive: 995.1 GB
0%
iSCSI: 0 B
0%



Next steps

- **Simplify NAS access:** LaCie recommends that you install the software utility *LaCie Network Assistant* before moving forward with the device configuration. LaCie Network Assistant gives you instant information on your LaCie NAS, such as firmware version, IP address, and hardware address. It will also provide quick access to shares (volumes) and the Dashboard. See [LaCie Network Assistant](#) for instructions.
- **Configure your NAS:** For details on how to configure and use your LaCie NAS, go to [Shares: Access and Transfer Files](#) and [NAS OS Administration](#).