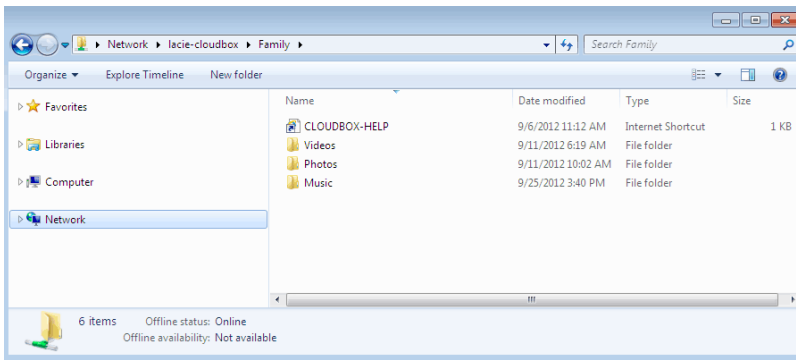


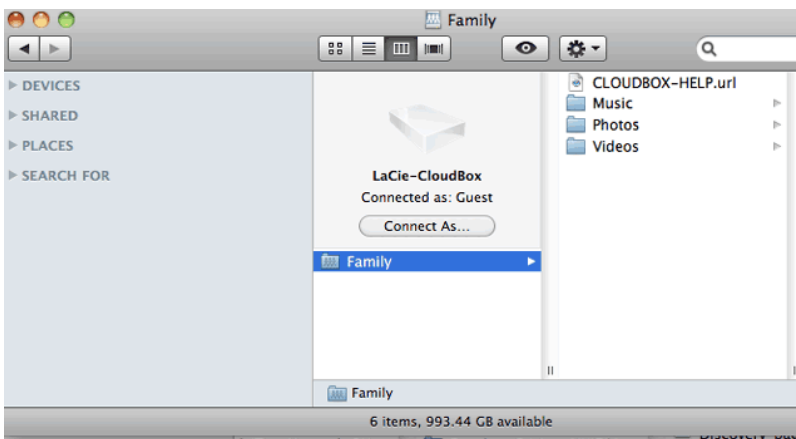
3. THE DISCOVER PAGE

The Discover page provides quick access to important links for your LaCie CloudBox as well as helpful tips on how to get started. You can access the Discover page at any time by double clicking the **CLOUDBOX-HELP** file on your LaCie CloudBox:

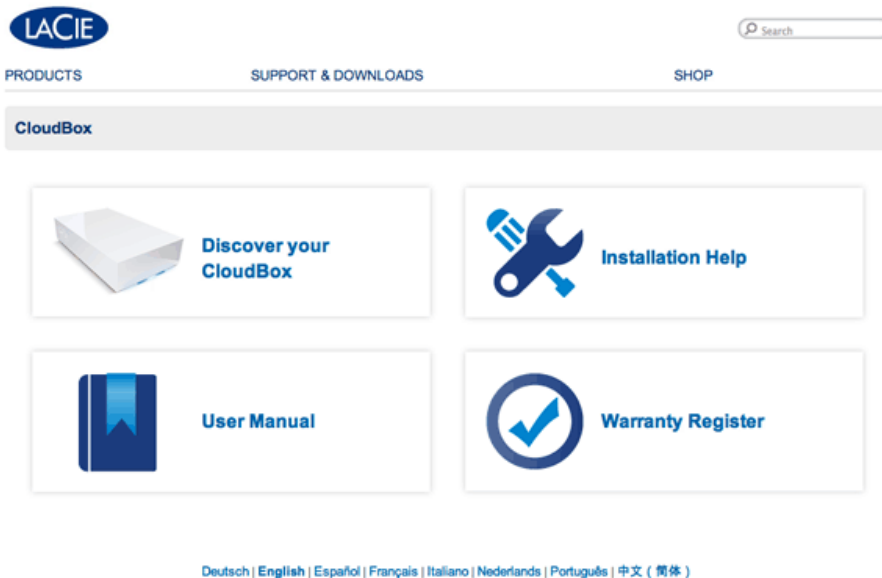
- **Windows:** **Computer/Network > LaCie-CloudBox > Family > CloudBox-Help**



- **Mac:** **Devices > LaCie-CloudBox > Family > Cloudbox-Help**



DISCOVER PAGE LINKS



- **Discover your CloudBox:** Click once to launch the LaCie CloudBox Tutorials. Use the tutorials to learn more about the LaCie CloudBox, especially the features that are most important to your household. You can return to the tutorials whenever questions arise as you continue to use the device. To read complementary details for each tutorial, please see [4. Learn How to Use Your LaCie CloudBox - Tutorials](#).
- **User Manual:** Click once on **User Manual** for easy access to this manual.
- **Installation Help:** Click once on the **Installation Help** button to receive online instructions on how to connect to your LaCie CloudBox.
- **Register Warranty:** Click once to register your LaCie CloudBox with LaCie. Registering your device will activate the warranty and help you receive customer support should you encounter an issue with your device.

Launch the Discover page

For further instructions on accessing the Discover page, please select your operating system. For direct access, go to <http://www.lacie.com/cloudbox-help>.

Windows XP

1. Open an Explorer Window by clicking twice on your internal hard drive (e.g. **My Computer** or the C: drive).
2. Click on **My Network Places**.
3. Click on **View workgroup computers**.
4. Click twice on **LaCie-CloudBox**.
5. Open the folder **Family**
6. Click twice on **CLOUDBOX-HELP**.

Important info: If your version of Windows XP does not include a link to *workgroup computers*, please see www.lacie.com/cloudbox-install for alternative instructions on accessing your LaCie CloudBox.

Windows Vista/7

1. Open **Computer**.
2. Click on **Network**.
3. Click twice on **LaCie-CloudBox**.
4. Open the folder **Family**.
5. Click twice on **CLOUDBOX-HELP**.

Important info: If your version of Windows Vista/7 encounters difficulty reaching the *Network*, please see www.lacie.com/cloudbox-install for alternative instructions on accessing your LaCie CloudBox.

Windows 8

1. If you are in Windows 8 view, click on **Desktop**.
2. On the lower left of the screen, click on the icon for **Libraries**.
3. Click on **Network**.
4. Click twice on **LaCie-CloudBox**.
5. Open the folder **Family**.
6. Click twice on **CLOUDBOX-HELP**.

Important info: If your version of Windows 8 encounters difficulty reaching the *Network*, please see www.lacie.com/cloudbox-install for alternative instructions on accessing your LaCie CloudBox.

Mac

1. Open the **Finder**.
2. Under **SHARED**, click on **LaCie-CloudBox**.
3. Open the folder **Family**.
4. Click twice on **CLOUDBOX-HELP**.