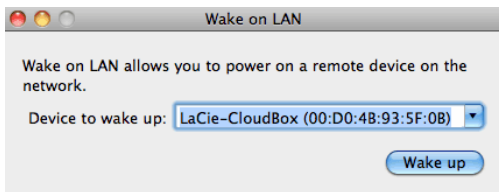


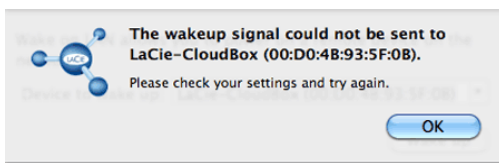
6.e Wake on LAN (WOL)

You can use LaCie Network Assistant to wake your LaCie CloudBox from Deep Sleep Mode.

1. Go to **LaCie Network Assistant > Wake Up a Device...**
2. Select your device from the pulldown menu **Device to wake up:**. You will see the device listed by its name and MAC address.



3. Click **Wake up**
4. A prompt will inform you that the message has been sent to your network storage.



See [Eco Management](#) for details on deep sleep mode.