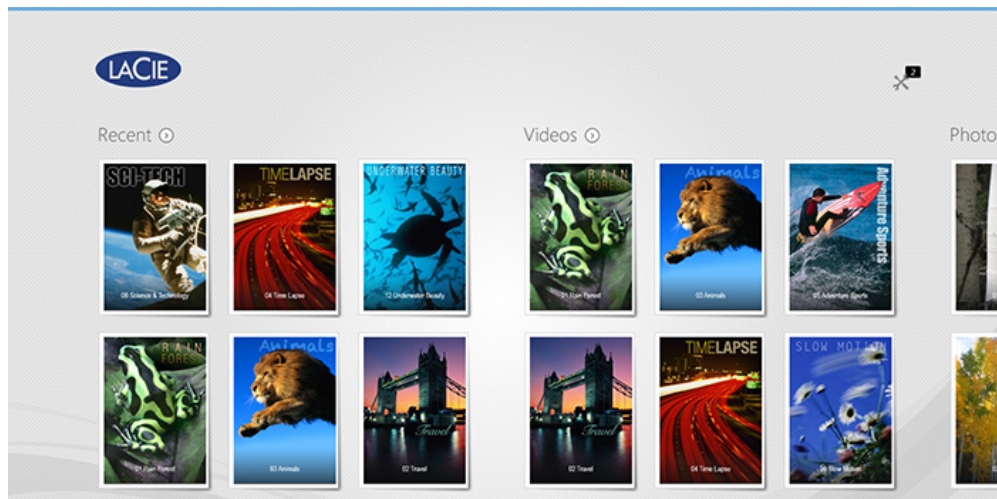


USING MEDIA APP CONTROLS

Controls for the media app can be found within the app bar.

START PAGE



The Start Page appears with each initial launch of the media app.

Tip: If you are having difficulty returning to the Start Page, quit the media app and then open it again.

View media libraries

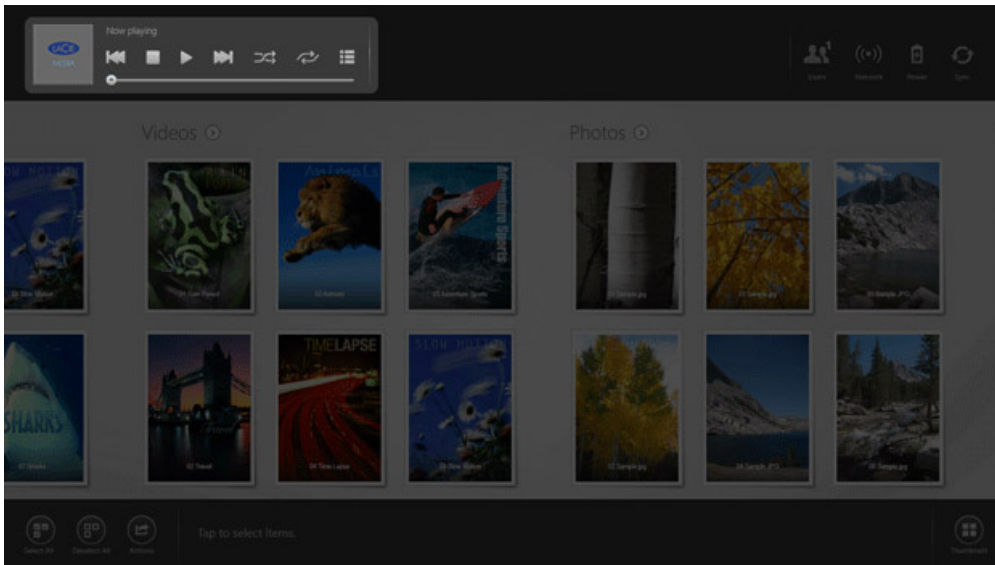
The Start Page gives you a quick view of the libraries and folders on your storage device and your mobile device.

1. Navigate between libraries by swiping your finger left to right and right to left.
2. To view the all the contents of a library, tap on the arrow next to the library name. For example, tap on the arrow next to Photos to see all the pictures on your storage device.
3. When in a library view, you can return to the Start Page by tapping on the home icon on the upper left corner.

App bar controls

Enable the app bar to reveal the media app controls. From the top of the screen, swipe your finger down.

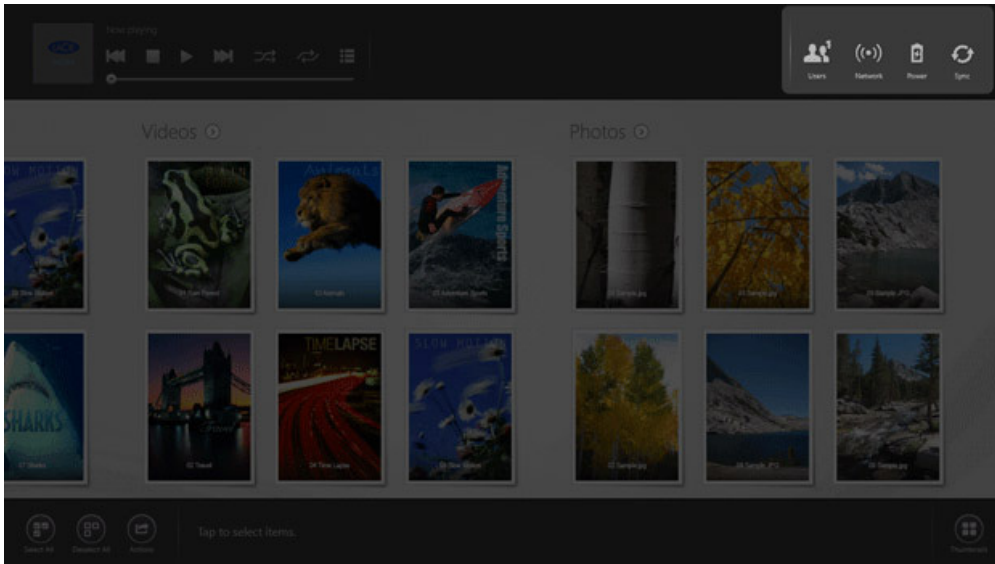
Upper left: now playing (music)



You can play music while browsing the media app. Playback options include: return to the start of the track; stop; play/pause; skip to the end of the track; random play (interconnected arrows); continuous play (circular arrows); and show list (tap on the list icon to see tracks in the queue).

The default media app icon will change to the icon for the track that you are playing.

Upper right: device status controls



App bar device status controls include:

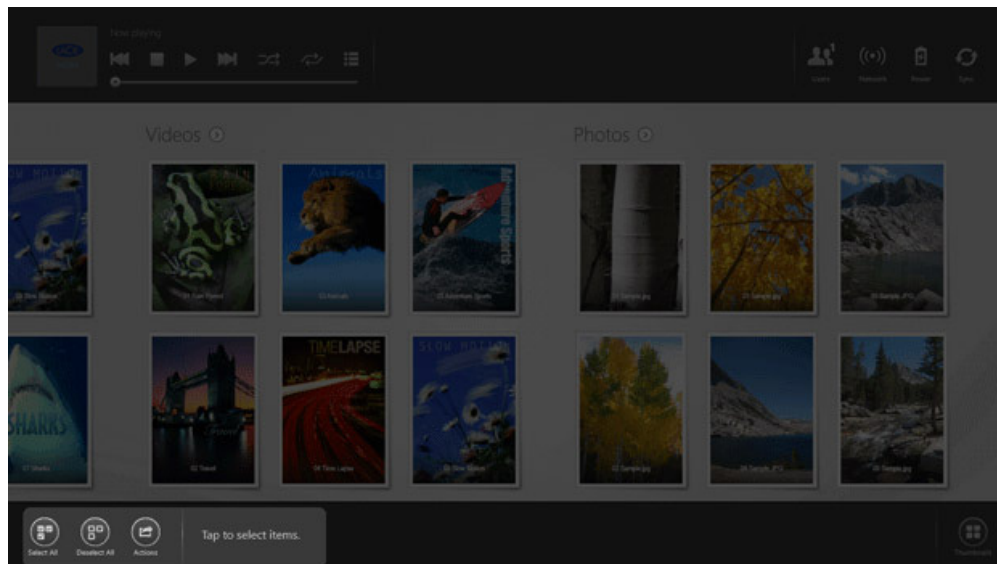
- **Users.** Review the number of users connected to the storage device.
- **Network.** Enable/disable the storage device's connection to the Internet.

1. Tap **Network**.
2. Tap on the switch for **Connect Product**. *Product* is the name of your storage device.
3. Tap on the Wi-Fi network to join.
4. Enter the password.

Note: The mobile device briefly loses contact with the storage device while connection is established. The icon for Network changes to indicate connection to the Internet.

- **Power.** Tap **Power** to review the remaining charge for the battery.
- **Sync.** Tap **Sync** to refresh the page.

Lower left: select and actions

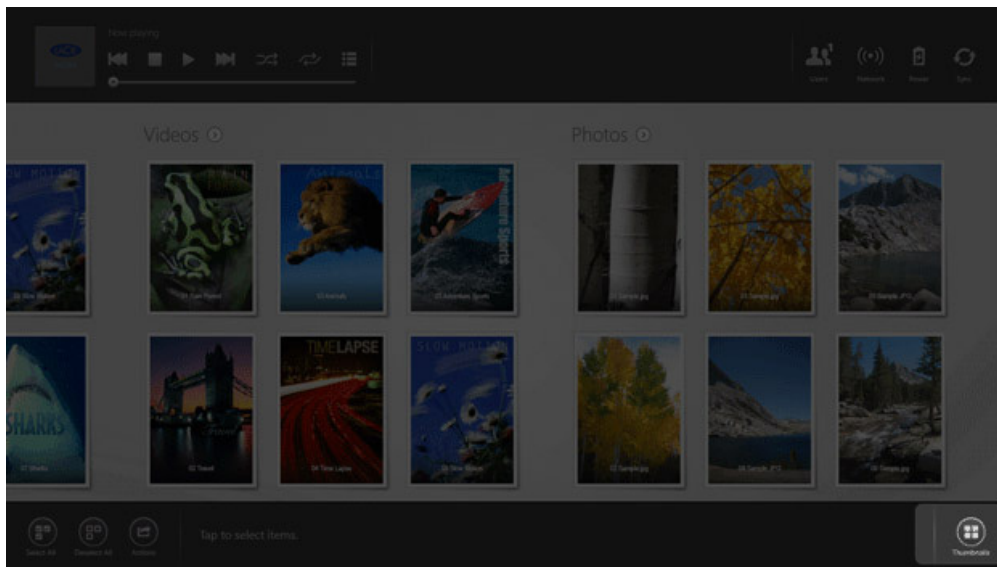


The lower left corner of the app bar provides the functions for managing content:

- Tap **Select All** to select all items on the screen.
- Tap **Deselect All** to deselect all items on the screen.
- An action generally follows a selection of one or more items. The steps below describe how to select content and choose an action. You can use these steps when viewing the Start Page, a media library (Videos, Photos, Music, and Documents), and folders (storage device and mobile device).
 1. Tap on the items you want to manage. A check mark appears on each item that you select.
 2. Tap **Actions** and tap one of these options: Copy; Delete; Download; Upload; Move; and Play.

Note: This list does not include all actions available with the media app.

Lower right: view



Tap on the icon to switch the view to:

- List
- Thumbnails