

GETTING CONNECTED

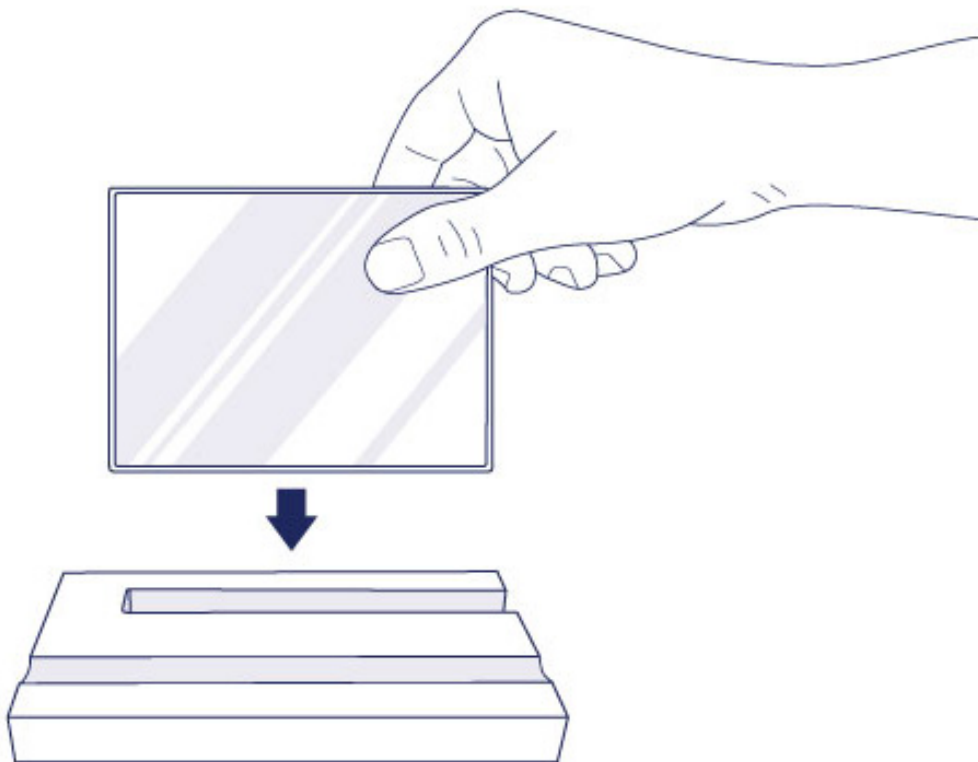
Installing your LaCie Mirror is easy for all users, connect it to your computer then run LaCie Setup Assistant. LaCie Setup Assistant helps you to configure the LaCie Mirror for your computer. Make certain to follow the steps below in the proper order:

1. **Step 1 - Connect the USB cable**
2. **Step 2 - Launch LaCie Setup Assistant**

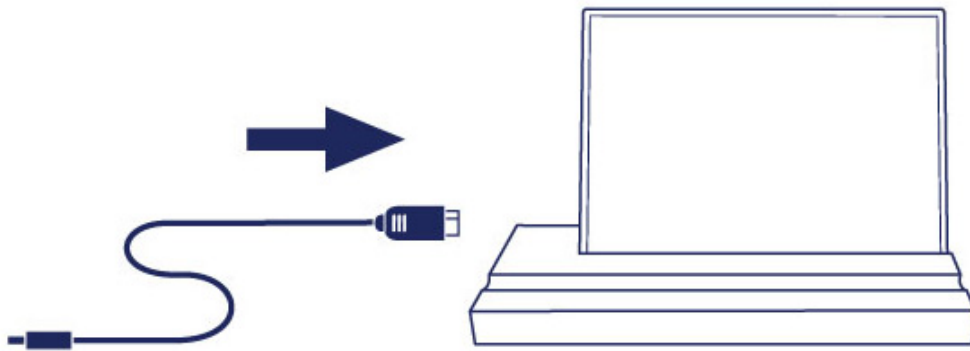
Caution: Do not stack the LaCie Mirror on another Mirror, other hard drives, or electronic devices.

STEP 1 - CONNECT THE USB CABLE

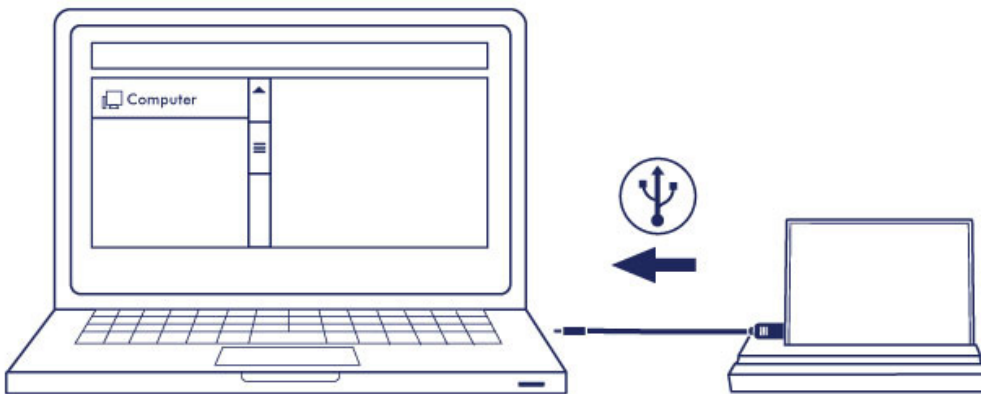
1. Place the LaCie Mirror's wood stand on a flat, stable surface next to your computer.
2. Place the LaCie Mirror on its wood stand.



3. Connect the USB cable to the Mirror.



4. Connect the USB cable from the Mirror to the computer.



The hard drive's volume mounts on your computer.

Go to [STEP 2 - Launch LaCie Setup Assistant](#)

Technical note: If the computer's USB bus does not provide the necessary power to operate your LaCie device, you may require a USB-Y cable. The USB-Y cable can be purchased from www.lacie.com/accessories. See [USB-Y Cable](#) for details.

Note: If the hard drive volume does not mount on your computer, see troubleshooting topics at [Getting Help](#).

STEP 2 - LAUNCH LACIE SETUP ASSISTANT

LaCie Setup Assistant (LSA) must be launched before using your drive. It will allow you to:

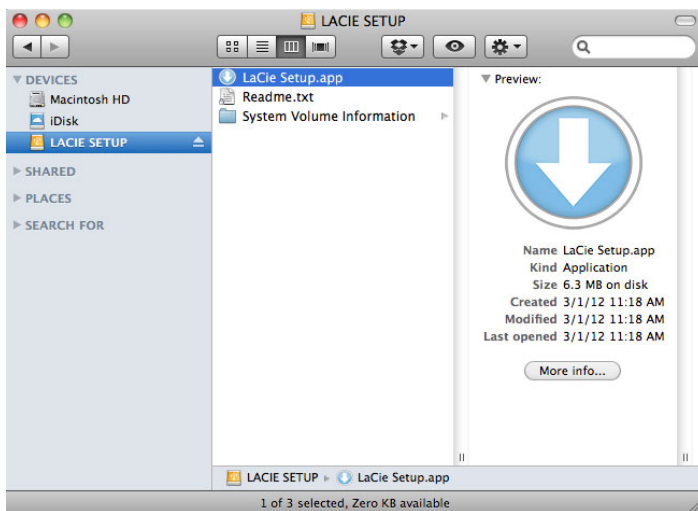
- Easily format the hard drive according to your needs
- Copy the User Manual to your computer
- Install software for added features
- Register your LaCie device

Important info: If you do not launch LSA or if you quit it after the formatting has begun, your drive will not be ready to use and will require manual formatting. The User Manual and utilities will not be available and will have to be downloaded from the LaCie website: www.lacie.com/support/.

Launch LaCie Setup Assistant

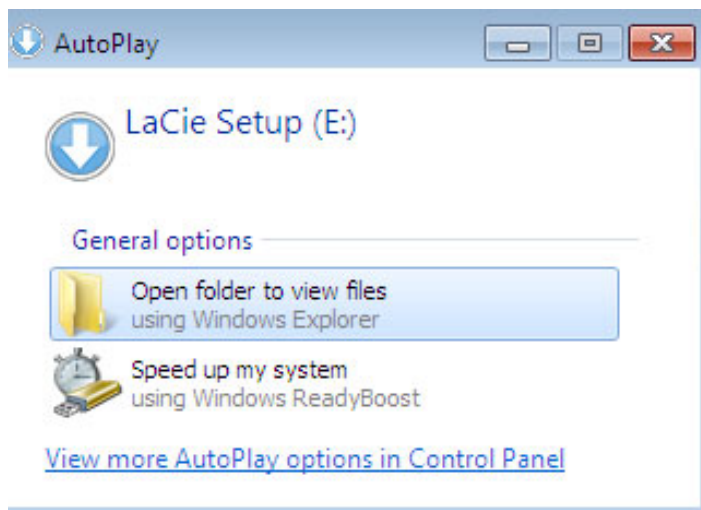
Mac users

Open the **LACIE SETUP** volume on your desktop and then double-click **LaCie Setup**

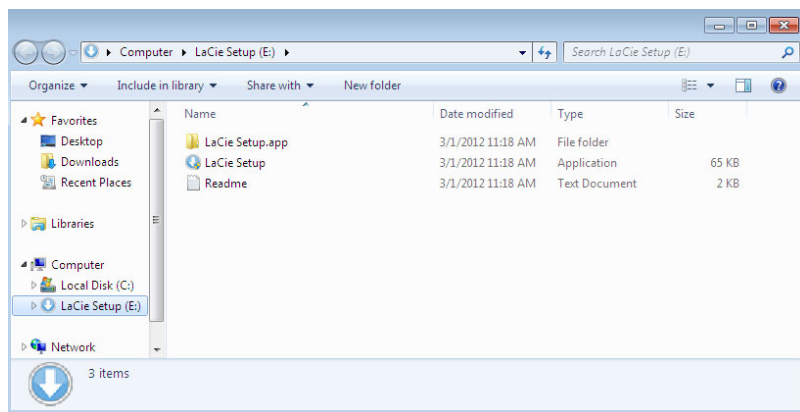


Windows users

AutoPlay: Windows AutoPlay may detect your LaCie hard drive as soon as it is connected to your computer. If the AutoPlay window appears, choose on **Open folder to view files using Windows Explorer** and double-click **LaCie Setup**.



Manual access: Open the **LACIE SETUP** volume in **Computer (My Computer for Windows XP)** and double-click **LaCie Setup**.

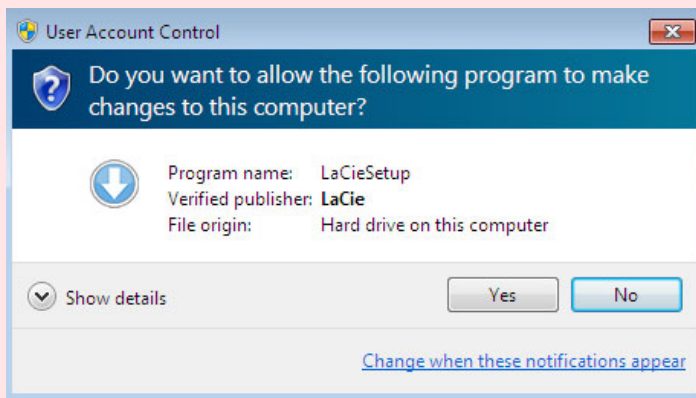


Setup

LaCie Setup Assistant does not prevent you from using your computer's native disk utility program to format or partition your LaCie drive. Simply follow the Setup Assistant through completion, then use Disk Utility for Mac or Disk Management for Windows to reformat your drive.

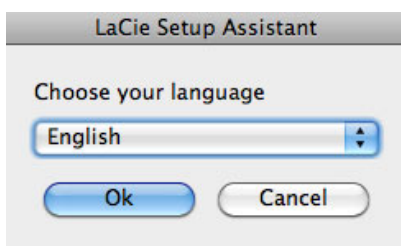
Important info for Mac users: You may be prompted to enter your computer password to continue with LaCie Setup Assistant.

Important info for Windows users: While running LaCie Setup Assistant, generic pop-up windows may ask if you wish to change your computer's settings. This is a normal request when formatting a disk or installing certain software, such as Genie Timeline. To successfully complete LaCie Setup Assistant, LaCie recommends that you agree to change the settings.

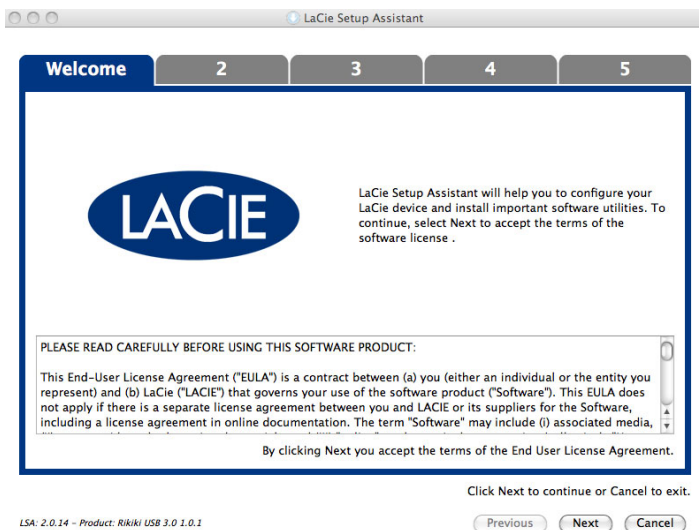


Follow the on-screen instructions as listed below to format your drive and install software utilities:

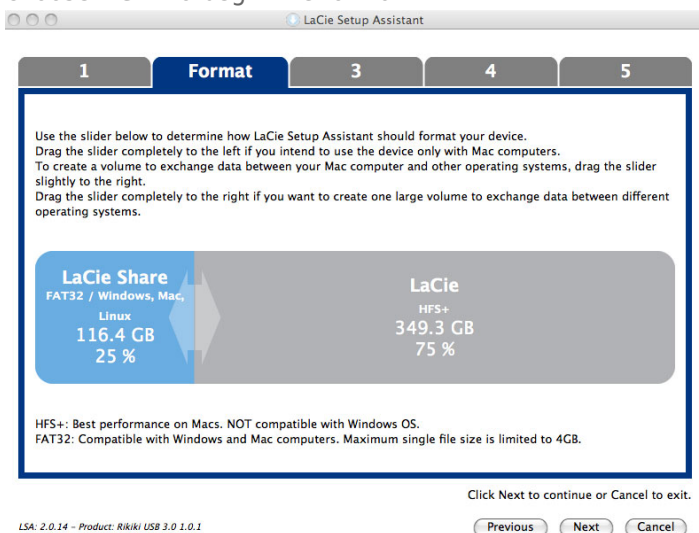
1. Select your language.



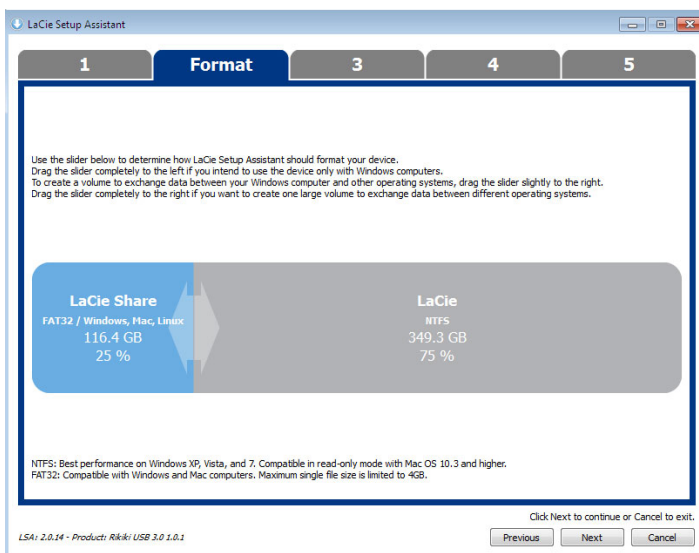
2. Please read the license agreement before choosing **Next**. Selecting **Next** confirms that you accept the license agreement.



- Use the slider to partition your LaCie hard drive. Moving the slider to the left will reduce the size of the **Compatible** volume (called **LaCie Share** on some products) (for Windows and Mac). If you do not want the **Compatible** / **LaCie Share** volume, move the slider all the way to the left. The LaCie volume will be formatted for your operating system, HFS+ for Mac or NTFS for Windows. Once you have made your selection, choose **Next** to begin the format.

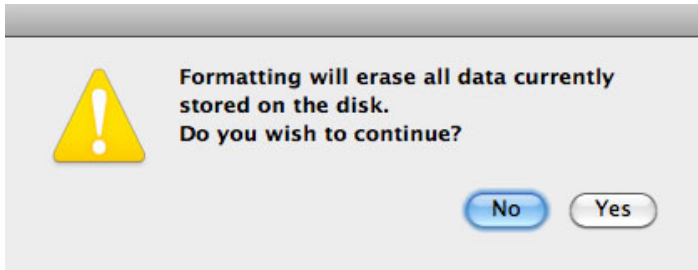


Mac

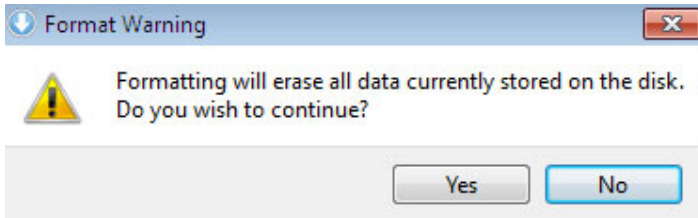


Windows

4. A window prompt alerts you that the disk will be formatted. Select **Yes** to continue.

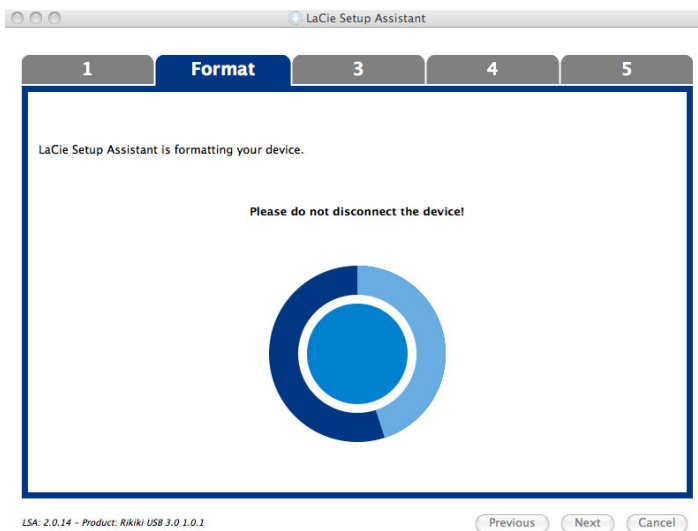


Mac



Windows

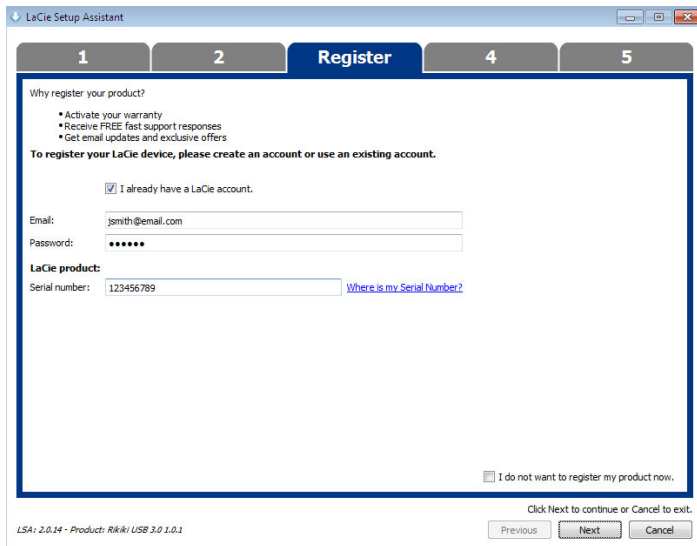
5. LaCie Setup Assistant will format the hard drive.



6. Register your LaCie device. Choose **Next** to continue.

A screenshot of the LaCie Setup Assistant window at the "Register" step. The title bar says "LaCie Setup Assistant". The progress bar shows steps 1, 2, 3 (labeled "Register"), 4, and 5. The main area is titled "Why register your product?" and lists benefits: "Activate your warranty", "Receive FREE fast support responses", and "Get email updates and exclusive offers". Below this, it says "To register your LaCie device, please create an account or use an existing account." and has a checkbox "I already have a LaCie account." which is unchecked. There are input fields for "First name" (John), "Last name" (Smith), "Email" (jsmith@email.com), "Password" (masked with dots), and "Confirm password" (masked with dots). Below these is "LaCie product:" and a "Serial number" field with the value "123456789" and a link "Where is my Serial Number?". At the bottom right, there is a checkbox "I do not want to register my product now." which is unchecked. At the very bottom, it says "Click Next to continue or Cancel to exit." and has "Previous", "Next", and "Cancel" buttons. The footer text is "LSA: 2.0.14 - Product: Rikiki USB 3.0 1.0.1".

New Account



Existing Account

7. Choose the software utilities that you want to install. Please note that certain software utilities may begin to install before LaCie Setup Assistant has finished. Follow the software utility installer before completing LaCie Setup Assistant.
8. Choose **Next** to continue.
9. LaCie Setup Assistant provides a summary of the installation. Choose **Finish** to close the program. Your LaCie hard drive is now ready for use.

Software will be installed on the product's storage, not on your computer. It will be located on the volume entitled "Compatible" or "LaCie Share" if it exists, otherwise on "LaCie".

LaCie software utilities may be installed at any time. Once the format is complete, the LaCie Setup Assistant application will be available on:

- LaCie: if you created one partition
- Compatible/LaCie Share: if you created two partitions

To install the software utilities, simply launch LaCie Setup Assistant and follow the steps listed above.

UNMOUNTING THE VOLUME

In order to avoid file system corruption, it's important to unmount your volume before turning off the product or disconnecting the USB cable. See [Unmounting Your Hard Drive](#) for details.