

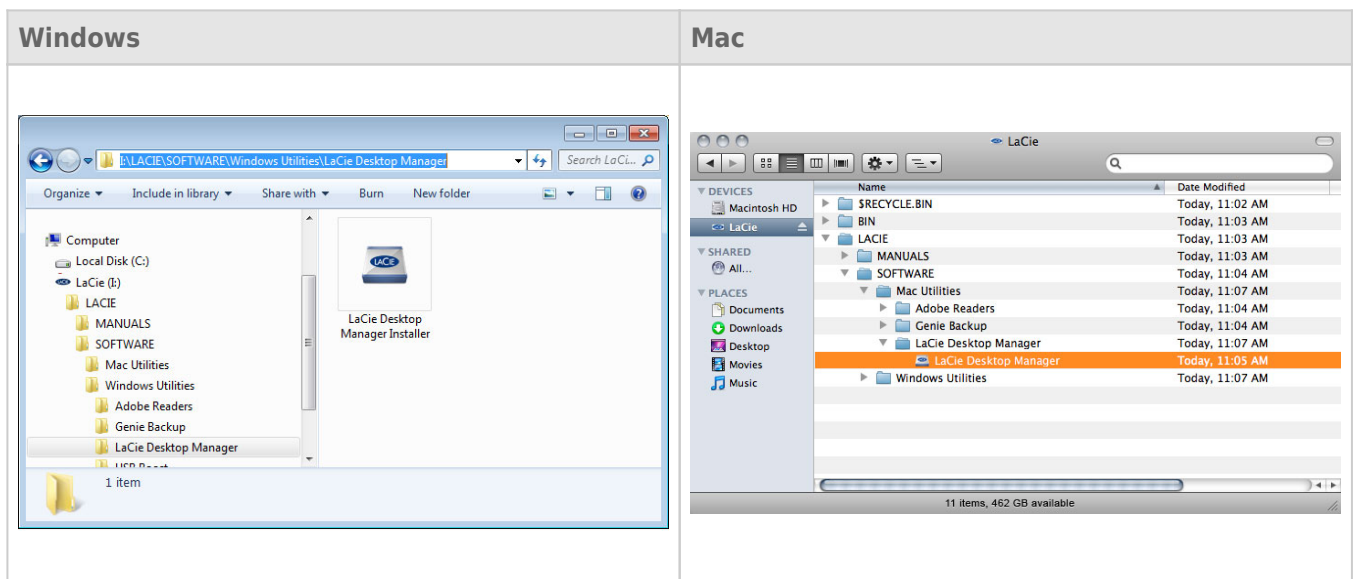
# LACIE DESKTOP MANAGER

LaCie Desktop Manager unlocks the full potential of your LaCie hard drive. It will allow you to see advanced information on your drive and to configure **Eco Mode**.

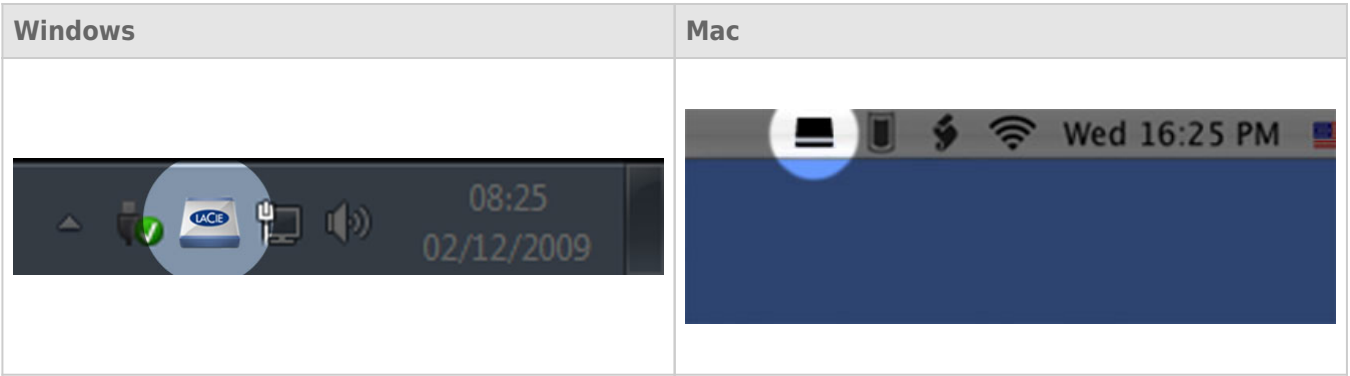
**Note:** LaCie Desktop Manager is not compatible with all LaCie devices. Only compatible LaCie devices will appear in LaCie Desktop Manager.

## INSTALLING LACIE DESKTOP MANAGER

If LaCie Desktop Manager is not installed on your system (check your Windows Start Menu or Mac Applications folder), you can install it by double clicking the drive icon in **My Computer/Computer** (Windows) or on the **Desktop** (Mac), opening the **LaCie/Software** folder, then launching the installer located in the folder for your operating system.



When setup has completed, launch the LaCie Desktop Manager from the System tray (Windows) or the Menu bar (Mac).



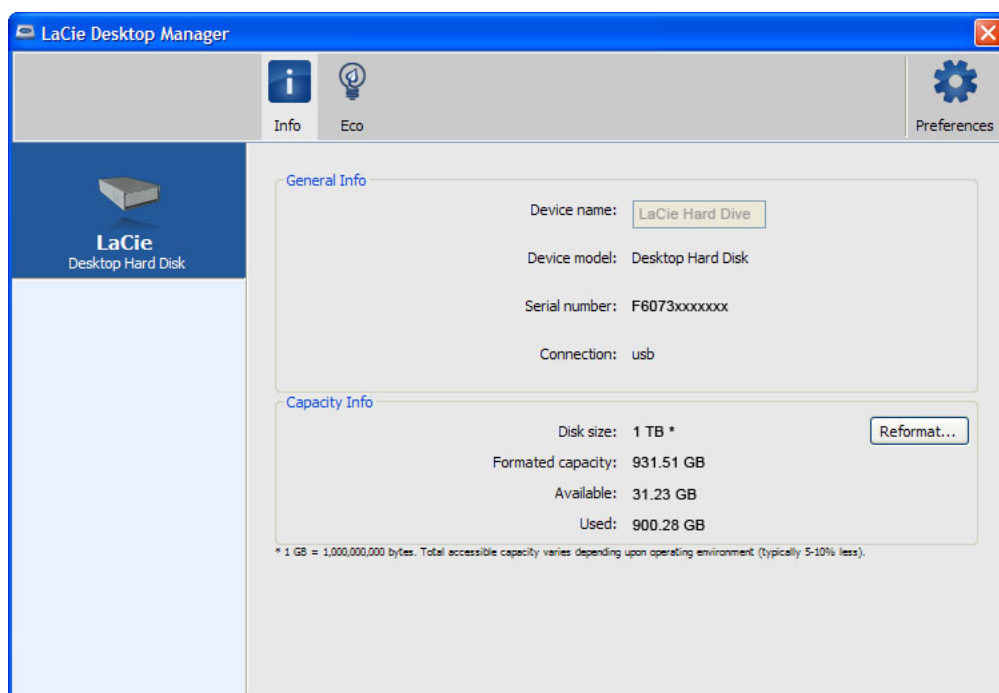
**Note:** If you have manually formatted the drive using your operating system's disk utility instead of or after running the LaCie Setup Assistant, you will need to download the LaCie Desktop Manager from [www.lacie.com/support/](http://www.lacie.com/support/).

## INFO TAB

When you run LaCie Desktop Manager, you will see that all compatible connected LaCie devices will appear in the left-hand column. Choose the drive you wish to manage and make sure the **Info** tab is selected. On this page you will see advanced information on your drive, such as device name, the internal hard disk serial number (not the LaCie product serial number), available capacity, connection type, etc.

You can also reformat the drive from this page.

**Caution:** If you click the **Reformat...** button and follow these steps, everything will be erased from the partition. If you have information that you want to protect or continue to use, back up this information before performing these steps.



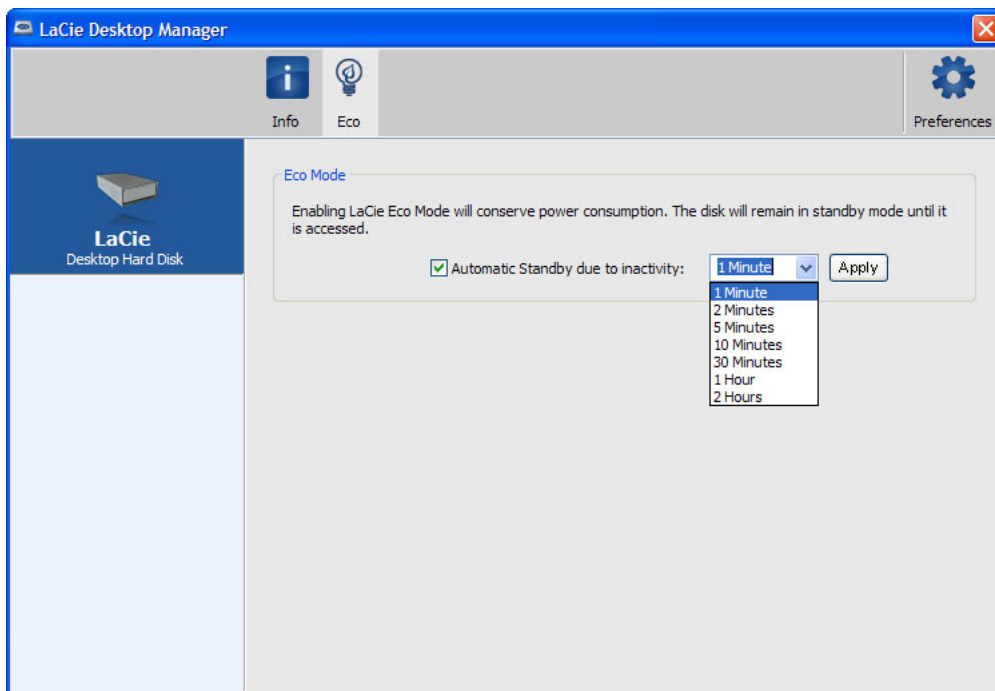
# ECO TAB

By default, your drive will enter Eco Mode after **five minutes** of inactivity in order to conserve energy. To exit Eco Mode, simply access data on the drive and the disk will automatically restart.

You can manage this feature using LaCie Desktop Manager. Click the **Eco** tab.

**Note:** If you don't see the Eco tab, your hard drive is incompatible with Eco mode. Check [www.lacie.com/support/](http://www.lacie.com/support/) for a product update which may allow your drive to benefit from this feature.

Unclick the **Automatic Standby due to Inactivity** box to turn off Eco Mode, or select a period of inactivity after which the drive will enter Eco Mode.



**Eco Mode and Mac OS X:** Based upon your LaCie hard drive, Eco Mode may be managed by Mac OS X. If prompted, please click on Energy Saver Settings to enter the System Preferences. Select "Put the hard disk(s) to sleep when possible" to conserve energy.

# UNINSTALL LACIE DESKTOP MANAGER

## Mac Users

Click the LaCie Desktop Manager icon in the menu bar, then select **Preferences**. In the window that opens, click **Uninstall LaCie Desktop Manager**.

## Windows Users

Use Windows' Control Panel to uninstall LaCie Desktop Manager. For detailed instructions from Microsoft, see here: [Windows 7](#) | [Windows Vista](#)