

# CHANGING THE LA-PRIVATE PASSWORD

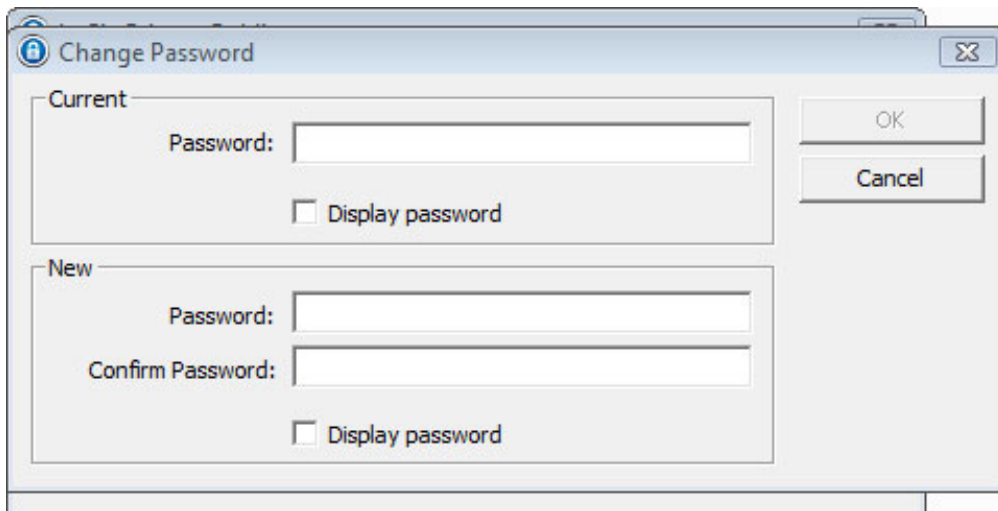
**Important info:** You must create the LA-PRIVATE volume before attempting to change its password.

Follow the steps below to change the password to LA-PRIVATE.

1. Insert the LaCie storage device into the compatible interface port on your computer.
2. Click twice on the LACIE icon in **My Computer/Computer** (Windows) or on the desktop (Mac).
3. LaCie Private-Public will recognize that you have created a LA-PRIVATE volume and prompt you for the password. (If you have not created LA-PRIVATE, the application will guide through the process. See the steps in [Create the LA-PRIVATE Volume.](#))



4. Click on the button **Change Password**.
5. Enter your **Current Password** as well as the **New Password**. You must also complete the field **Confirm Password** with the new password.



6. Check the **Display Password** boxes to see the characters as they are typed.
7. Click **OK**.
8. Your password has been changed.

