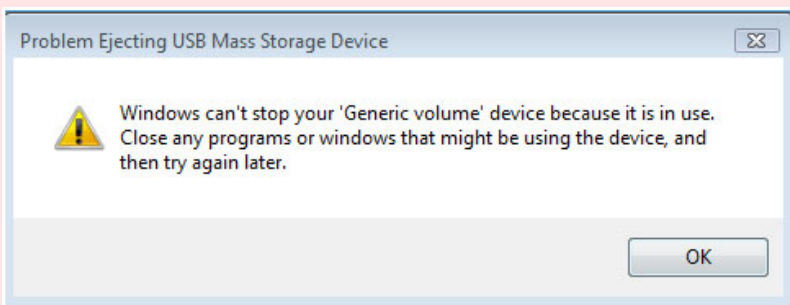


UNMOUNTING AND LOCKING LA-PRIVATE

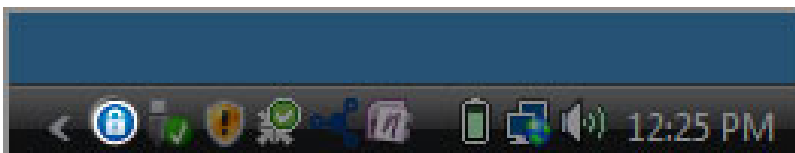
Unmounting LA-PRIVATE will prevent others from accessing your private data. It is a great way to lock LA-PRIVATE since the secure volume will no longer be available for unauthorized use. Follow the steps below to unmount and lock LA-PRIVATE.

Important info: You may wish to unmount both LA-PRIVATE and LACIE at the same time. For your security, LA-PRIVATE must be unmounted before LACIE. Your operating system will alert you when attempting to unmount LACIE first.

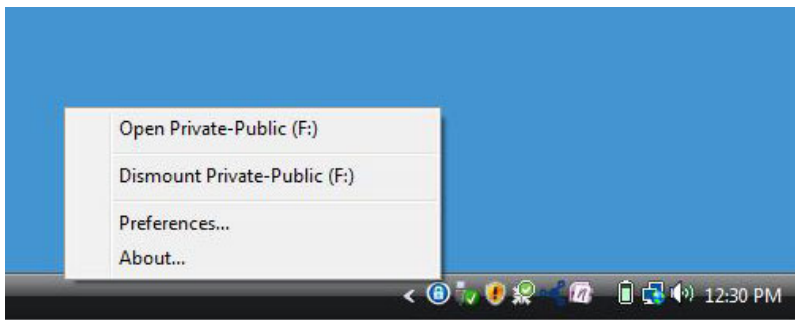


WINDOWS

1. The LaCie Private-Public icon will appear in the system tray when LA-PRIVATE is mounted. The system tray is on the lower right side of your computer screen.



2. Right-click on the LaCie Private-Public icon and select **Dismount Private-Public**.



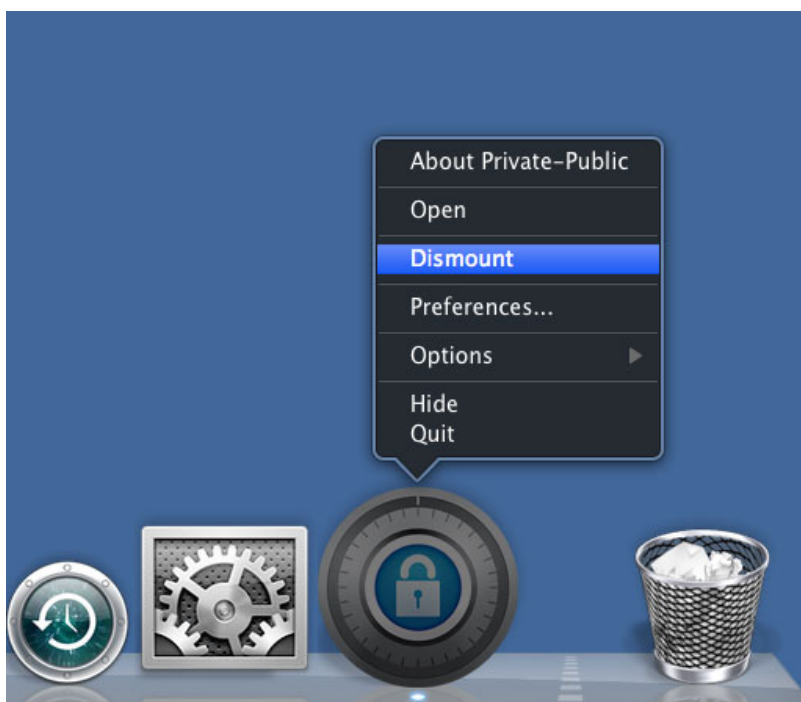
3. The LA-PRIVATE volume has been unmounted and locked.

MAC

1. Go to the Dock and search for the LaCie Private-Public icon.



2. Right-click on the LaCie Private-Public icon to select **Dismount**.



3. LA-PRIVATE has been unmounted and locked.