

TECHNICAL BRIEF: GETTING STARTED

BEFORE YOU BEGIN

The RAID for the LaCie 4big Rack Office has been pre-configured for your convenience. You can create shared volumes (Shares) and manage access to data following the initial DVD installation.

Important info on Windows Default Shares: For optimal server performance, the system partition should not be used to store data. Therefore, the pre-configured RAID includes a Data (D:) partition with greater storage capacity than the System volume. However, the Windows operating system places its default shared volumes (*Shares*) on the System (C:) volume. For ease of use and superior operation, LaCie highly recommends that you move the default Shares to the Data partition before using the server to store data. See [Shared Folders](#) for more information.

This Technical Brief is a valuable resource to learn how to install and use Windows® Home Server 2011 on your LaCie 4big Rack Office. Follow the step-by-step instructions to help you get started with the setup and administration of your server. Topics covered in this Technical Brief include:

1.

D
V
D
i
n
s
t
a
l
l
a
t
i
o
n

2.

C
o
n
f
i
g
u
r
i
n
g
a
b
a
c
k
u
p
o
n
t
h
e
s
e
r
v
e
r

a
n
d
a
w
o
r
k
s
t
a
t
i
o
n

3.

S
e
t
t
i
n
g
u
p
C
o
m
m
o
n
T
a
s
k
s

4.

M
u
c
h
m
o
r
e

While an exhaustive explanation of Windows Server is beyond the scope of this Technical Brief, LaCie encourages users and network administrators to further their understanding via the numerous books, instruction manuals, courses, and web sites on this subject.

Note: For instructions on hardware integration into a rack or on a desktop, please see the [4big Rack Office User Manual](#).

ADMINISTRATOR

In order to review, confirm, or redefine the software settings on your LaCie professional server, you must have Administrative rights to the device.

SOFTWARE: TOOLS FOR ACCESSING THE SERVER

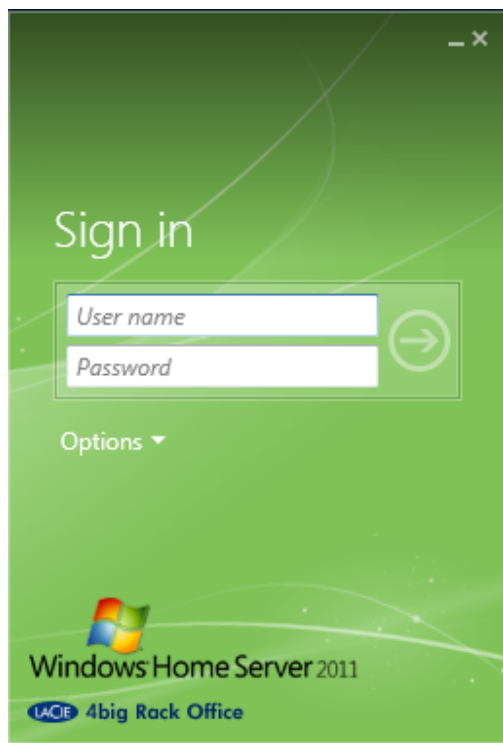
Your LaCie professional server is shipped with a DVD to configure Windows Home Server 2011 from any Windows workstation on the network.



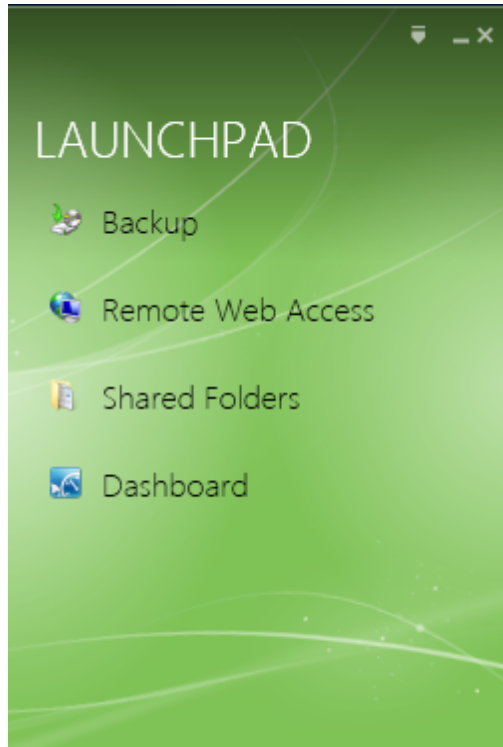
Windows Home Server 2011 includes the following helpful tools:

Connector: The Connector initiates the link between Windows workstations on your network and the 4big Rack Office. Downloading and running the Connector following the Server Setup will install Launchpad and Dashboard for: access to shared folders; automatic backups; and remote access at offsite locations (see [Server Setup](#)).

Launchpad: Users who have been granted access to the 4big Rack Office can use Launchpad to quickly view data stored in Shared Folders. Launchpad also helps users log into the server from remote locations once permission is granted by the administrator.



Launchpad login

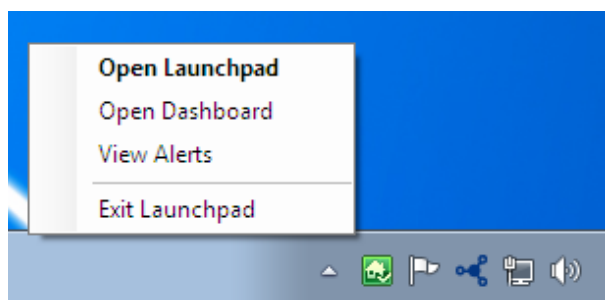


Launchpad

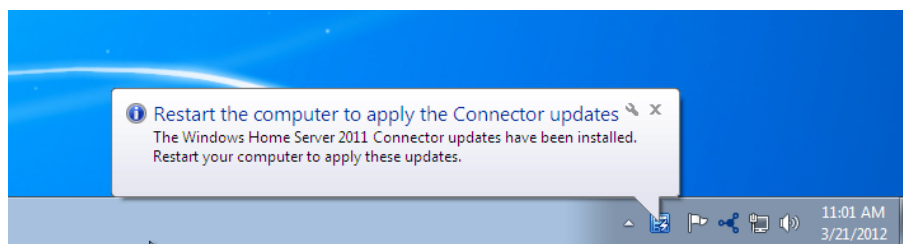
Launchpad system tray icon: The Launchpad icon in the system tray provides server system information as well as a handy menu to start the Launchpad and Dashboard interfaces. The icon will be green under most circumstances but can also turn orange to let you know of important messages.



System tray Launchpad icon

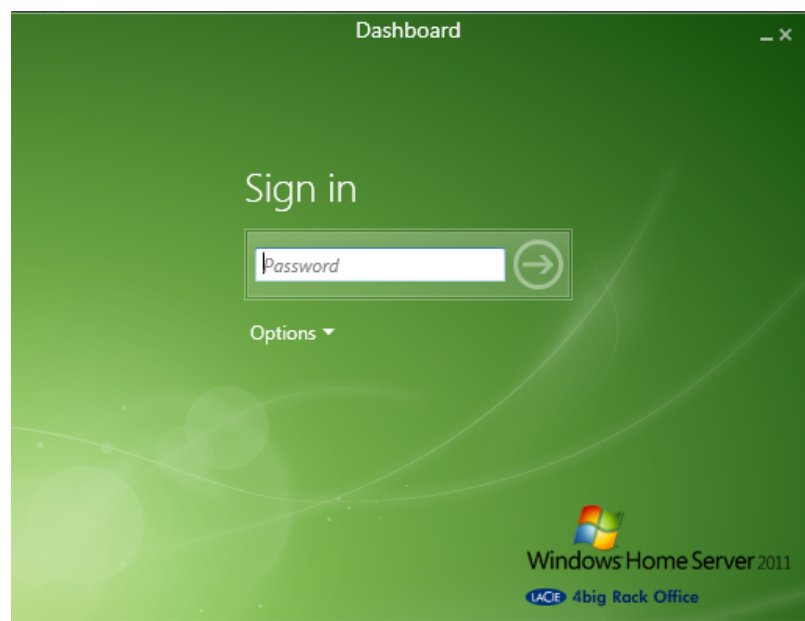


Access the Launchpad and Dashboard interfaces

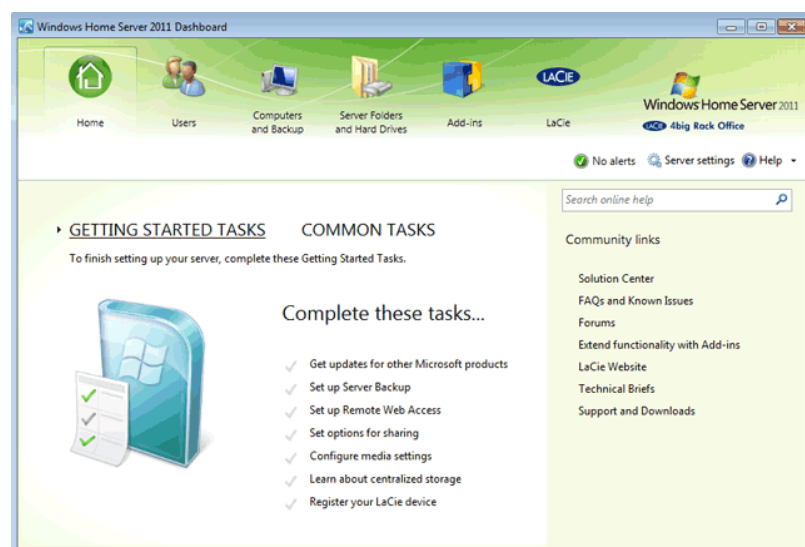


Launchpad message

Dashboard: The 4big Rack Office offers convenient administration from any workstation on the same network. An administrator can launch the Dashboard to enter his logon and password to create new shared folders, add users, and much more.



Dashboard login



Dashboard