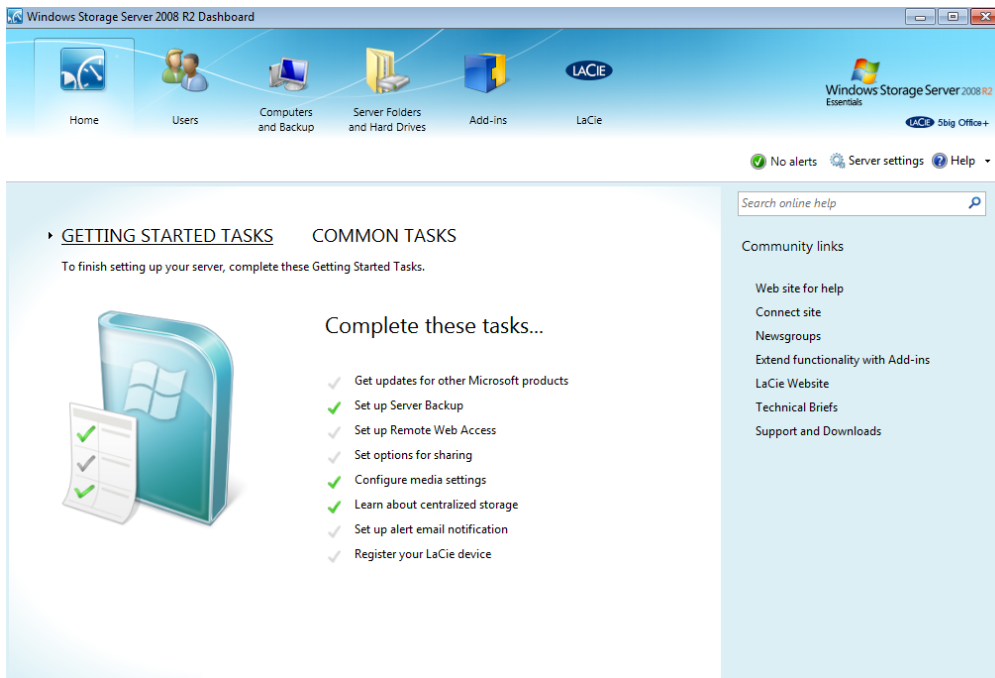


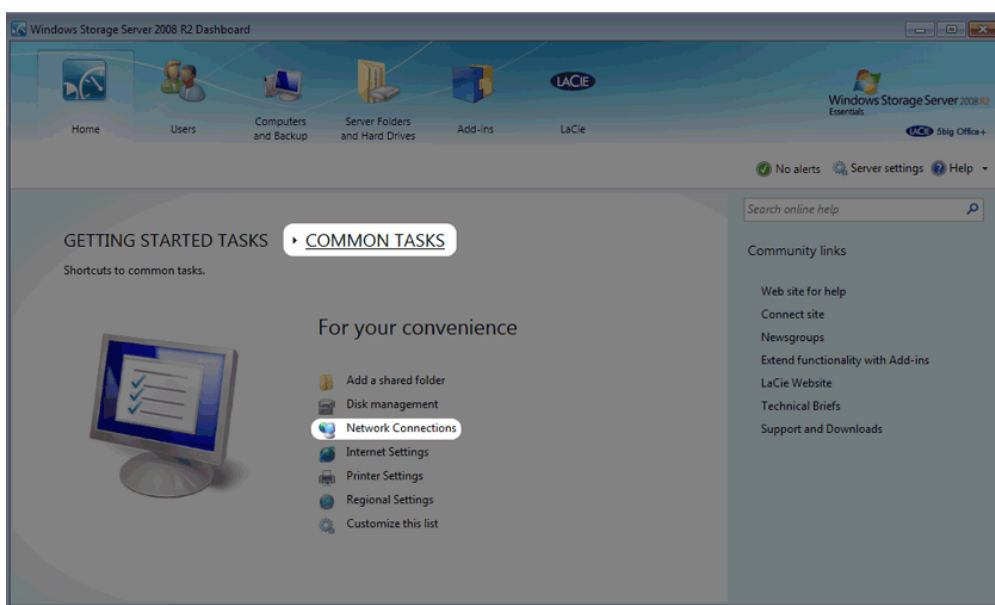
ADJUSTING THE SETTINGS

To make changes in the settings:

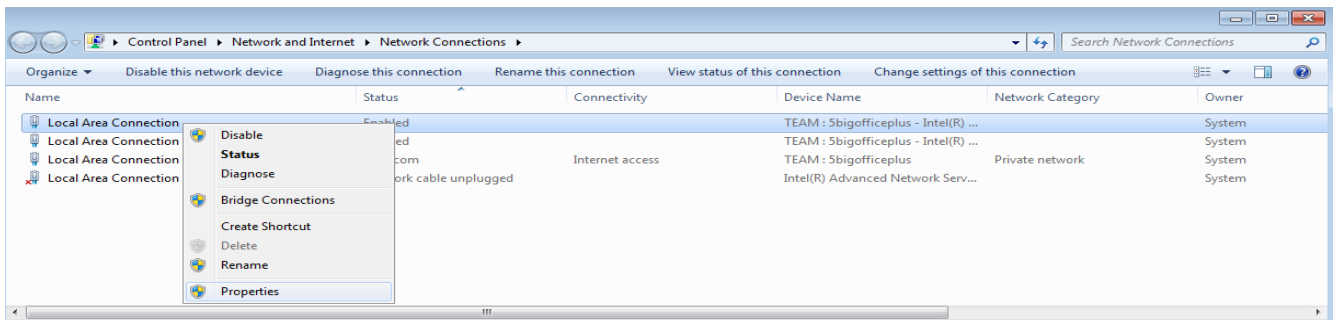
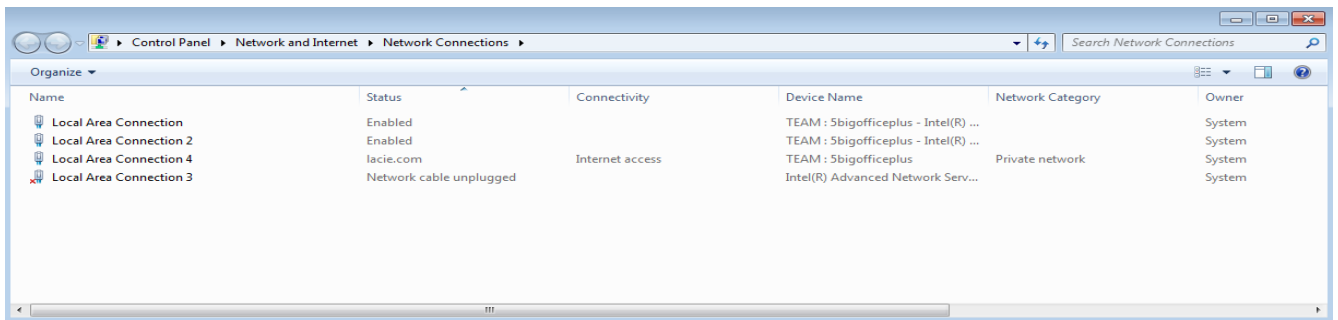
1. Launch the Dashboard from a Windows workstation on the same network as your LaCie server. **Start > All Programs > Windows Storage Server 2008 R2 > Windows Storage Server 2008 R2 Dashboard**



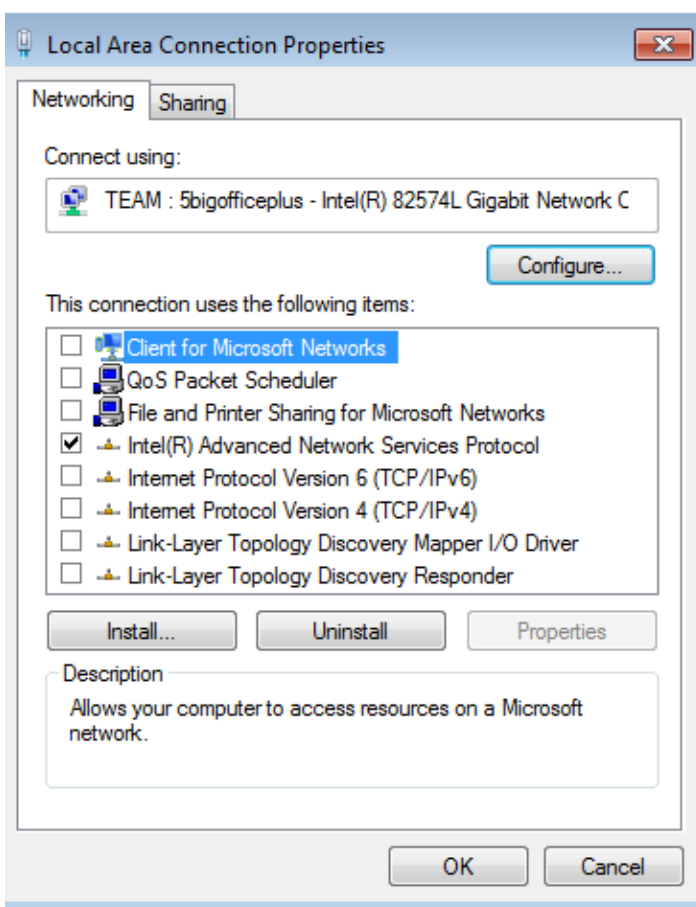
2. Click on **COMMON TASKS** to select **Network Connections**.



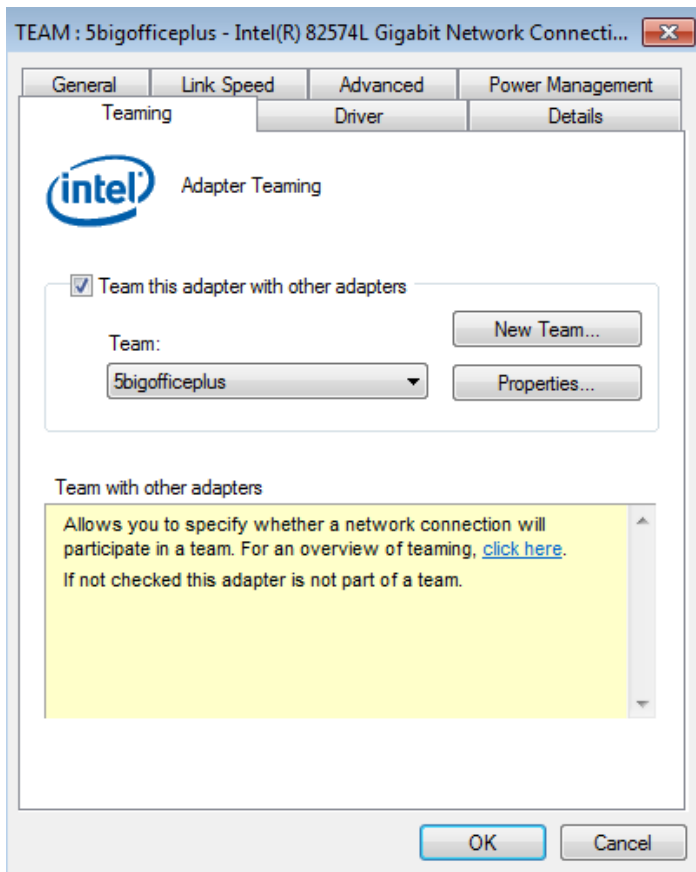
3. Right-click on the icon for the Ethernet Team.



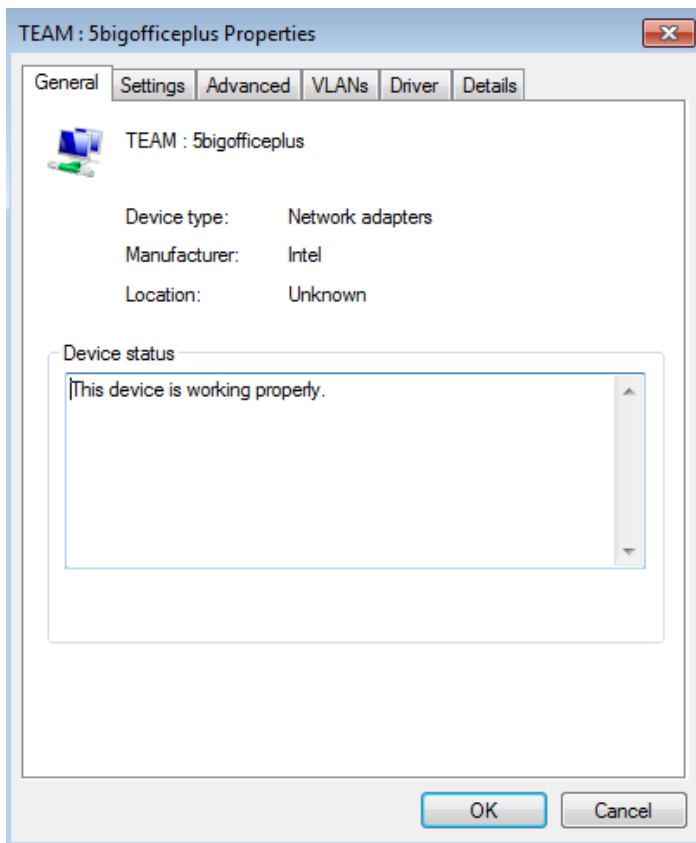
4. In the LAN Properties window, click on **Configure**.



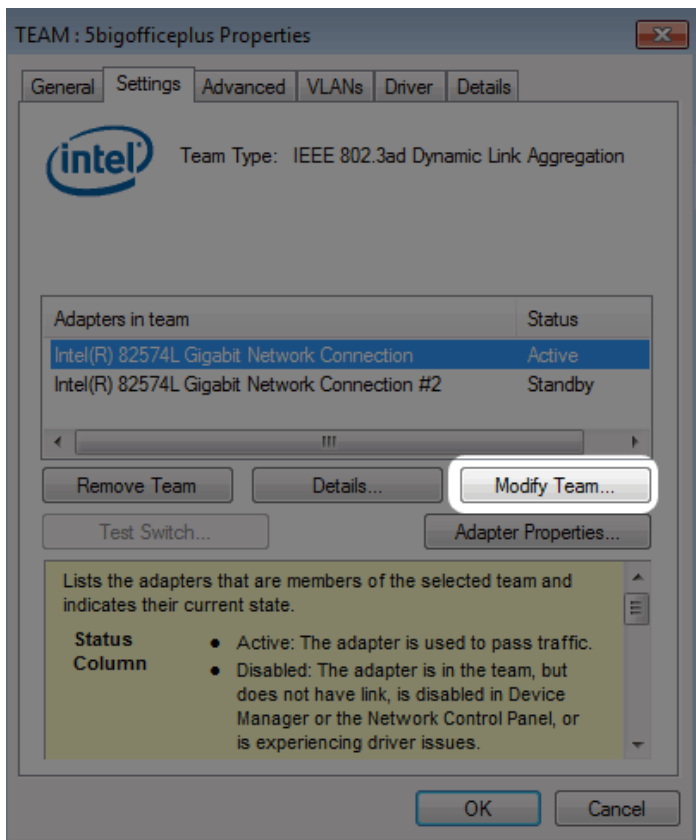
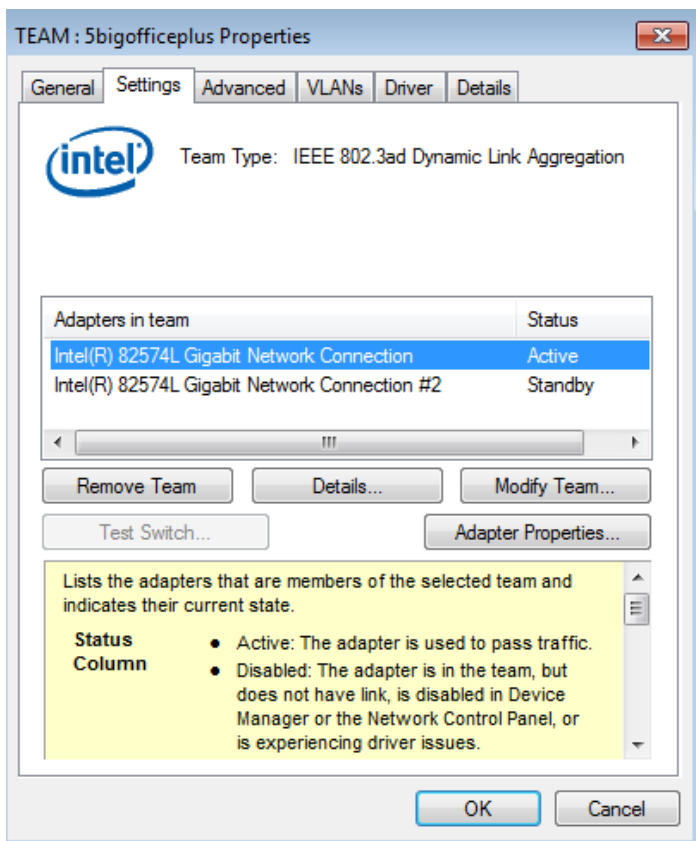
5. Choose the tab called **Teaming**.



6. The Ethernet Team properties window will open.



7. Choose the **Settings** tab then click on the **Modify** button.



8. You may set the primary Ethernet adapter in the **Adapters** tab and change the team type in the **Type** tab.

