

CREATE A NEW ACCOUNT

Wuala recommends that the administrator for your Business storage follows all instructions to create and manage your Company on Wuala.

PERSONAL AND BUSINESS WUALA STORAGE

All Wuala Business users must have personal Wuala storage, including the administrator. Please note that Wuala personal storage is never confused with your Wuala Business storage since they remain separate (see [Get Familiar with the Wuala Interface](#)). Additionally, all Wuala users receive 5GB of free secure cloud storage so your team members will experience enhanced data collaboration both at work and at home.

Existing Wuala Users: Go directly to [Configure Your Wuala Business Storage](#) to get started.

New Wuala Users: Follow the instructions below to install the Wuala application on your computer and configure Wuala personal storage.

Important info: Coworkers that already have Wuala personal storage should provide the Business storage administrator with their Wuala contact names. Please note that the administrator can create new Wuala personal storage for coworkers who have yet to join.

WUALA FOR YOUR COMPUTER

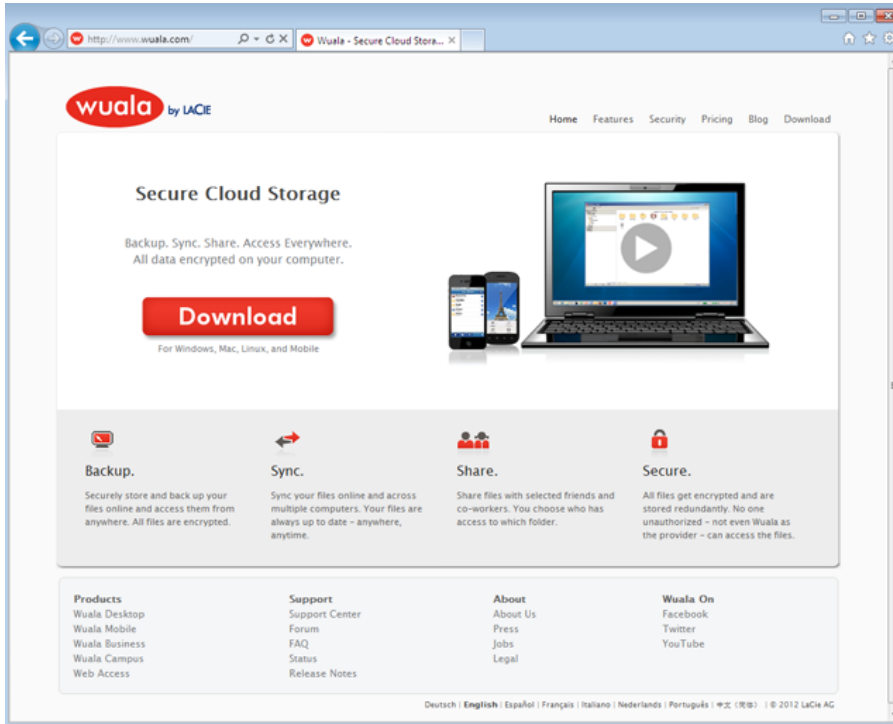
Please follow the instructions for downloading and installing Wuala according to your operating system:

- [Windows](#)
- [Mac](#)

Download and Install Wuala on Windows

To download Wuala onto your computer, please open your preferred browser and go to www.wuala.com.

1. Click on **Download**.

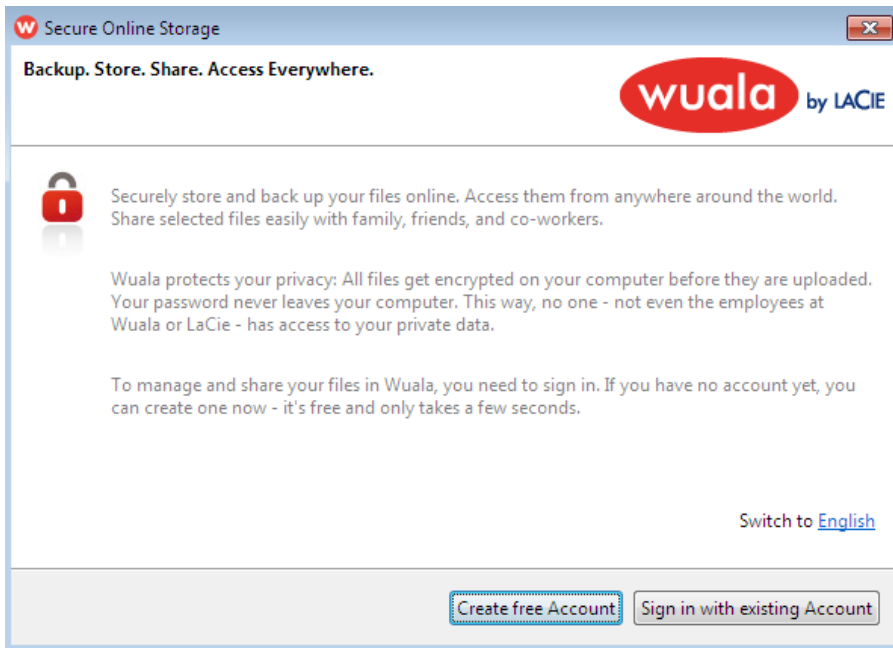


2. Depending upon the browser, you may receive a prompt asking if you wish to download or run the installer. Wuala recommends that you choose **Run** or its equivalent.
3. Once the installer has downloaded, the *Welcome to Wuala Setup* window will appear. Click **Next** to follow the installer prompts. If you are prompted to add drivers such as CBFS update, please follow the installation directions to completion. You may be asked to reboot your computer.



First Launch - Wuala on Windows

1. Launch Wuala from **All Programs/Programs**.
2. A prompt will ask you to sign in or create a new account. If you already have an account, select **Sign in with existing account** and skip to [Configure Your Wuala Business Storage](#). If you do not have an account with Wuala, click **Create free Account**. An email will be sent confirming your Wuala account.



3. Fill in all the applicable fields. **Please note that the *Promo code* is not the same as the *Wuala Business Starter Code*.** Check the box next to *I have read and agree with the Terms of Service* then click **Create Account**.

New Wuala Account

Welcome to Wuala
All data is encrypted on your computer before it is uploaded to Wuala.
Securely manage your files online with Wuala.

Username: Davidadmin

Email: davidadmin@cloudcentre.com

Password:

Confirm password:

Password hint: In-house standard

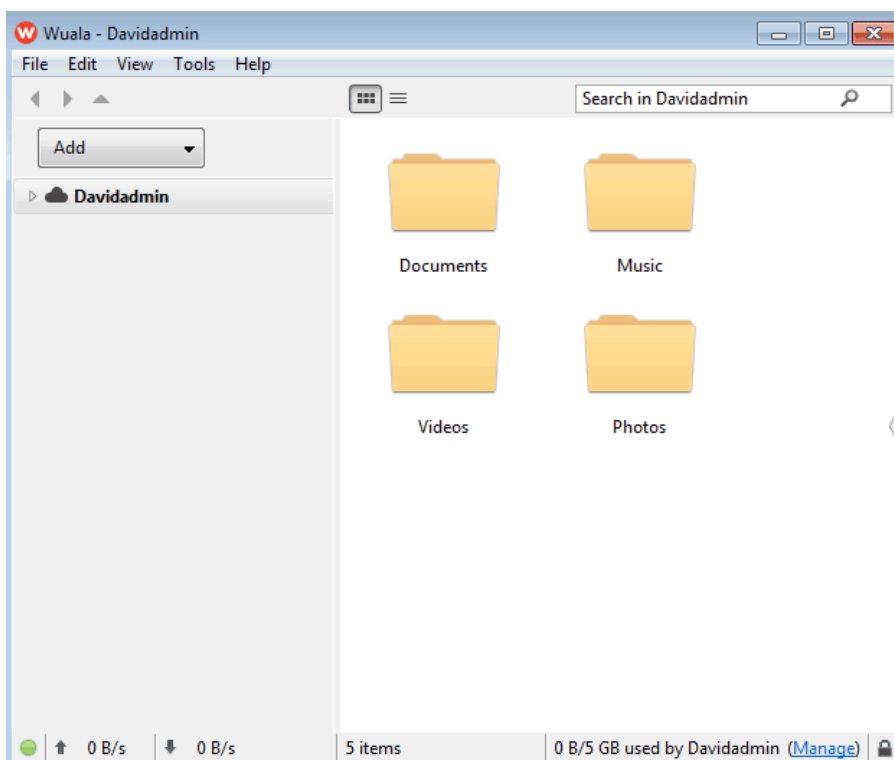
To protect your privacy, your password never leaves your computer. As a consequence, we cannot reset it nor send it to you should you ever forget it. [Learn more»](#)

Wuala Code (optional):

☒ I have read and agree with the [Terms of Service»](#)

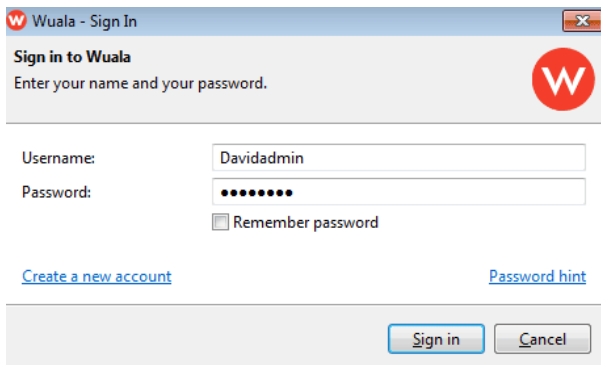
[? Learn more»](#) **Create Account** **Cancel**

4. Your personal account has been created. Go to [Configure Your Wuala Business Storage](#) to get started with your company's Wuala Business Account.

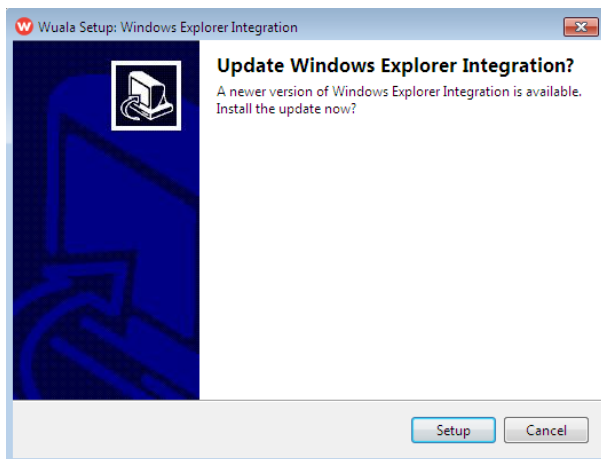


Notes on installation:

- If Wuala does not open immediately, please launch the application again from **All Programs/Programs**. At the prompt, select **Sign in with existing Account** then enter the login and password you created.



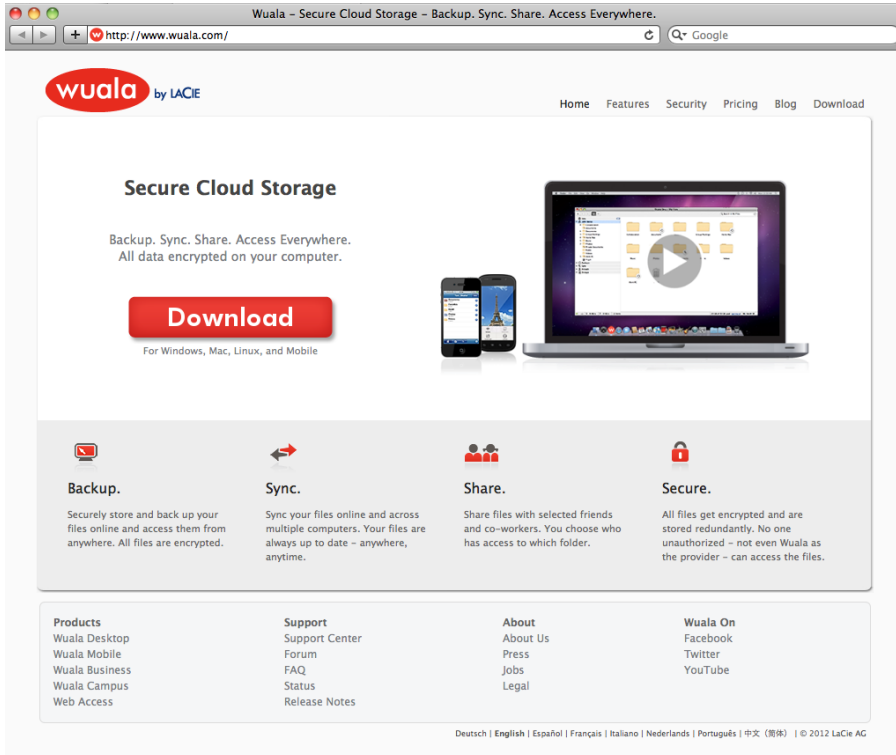
- A second update for Windows Explorer Integration may be required. If you are prompted, please click **Setup** to complete the installation steps and reboot your computer.



Download and Install Wuala on Mac

To download Wuala onto your computer, please open your preferred browser and go to www.wuala.com.

1. Click on **Download** to download Wualainstaller.dmg onto your computer.



2. Open the Wualainstaller.dmg file to begin the installation.
3. Wuala requires OSXFUSE to run properly on your Mac. If it is not already installed, please click twice on OSXFUSE.pkg to begin the installation.
4. Follow the installation steps for OSXFUSE. You may be prompted for the administrator's login and password.

First Launch - Wuala on Mac

Configure your Wuala personal storage:

1. From the desktop, select **Go > Applications** and click twice on the Wuala application.
2. You may receive a Mac OS prompt. Please select **Open** to continue.
3. A prompt will ask you to sign in or create a new account. If you already have an account, select **Sign in with existing account** and skip to [Configure Your Wuala Business Storage](#). If you do not have an account with Wuala, click **Create a new account**.
4. Fill in all the applicable fields. **Please note that the *Promo code* is not the same as the *Wuala Business Starter Code***. Check the box next to *I have read and agree with the Terms of Service* then click **Create Account**.

New Wuala Account

Welcome to Wuala
All data is encrypted on your computer before it is uploaded to Wuala.
Securely manage your files online with Wuala.

Username: Davidadmin

Email: davidadmin@cloudcentre.com

Password:

Confirm password:

Password hint: In-house standard

To protect your privacy, your password never leaves your computer. As a consequence, we cannot reset it nor send it to you should you ever forget it. [Learn more>](#)

Wuala Code (optional):

☒ I have read and agree with the [Terms of Service>](#)

[? Learn more>](#)

5. Your personal account has been created. Go to [Configure Your Wuala Business Storage](#) to get started with your company's Wuala Business Account.

