

LaCie Setup Assistant (LSA) must be launched before using your drive. It will allow you to:

- Easily format the hard drive according to your needs
- Copy the User Manual to your computer
- Install software for added features
- Register your LaCie device

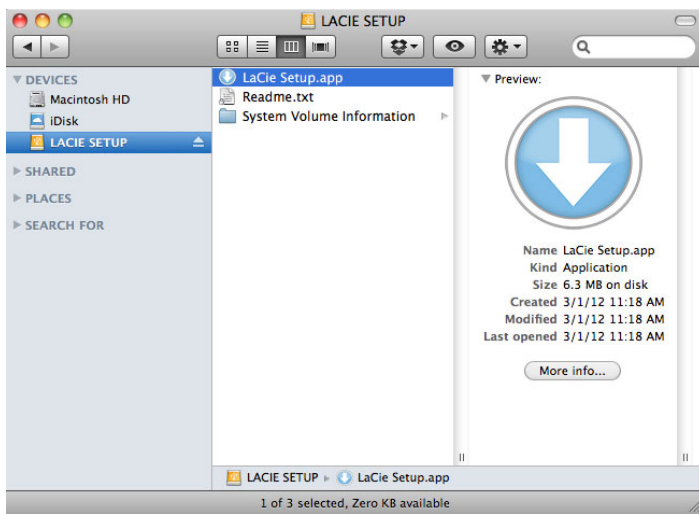
Important info: If you do not launch LSA or if you quit it after the formatting has begun, your drive will not be ready to use and will require manual formatting. The User Manual and utilities will not be available and will have to be downloaded from the LaCie website: www.lacie.com/support/.

Launch LaCie Setup Assistant

Mac users

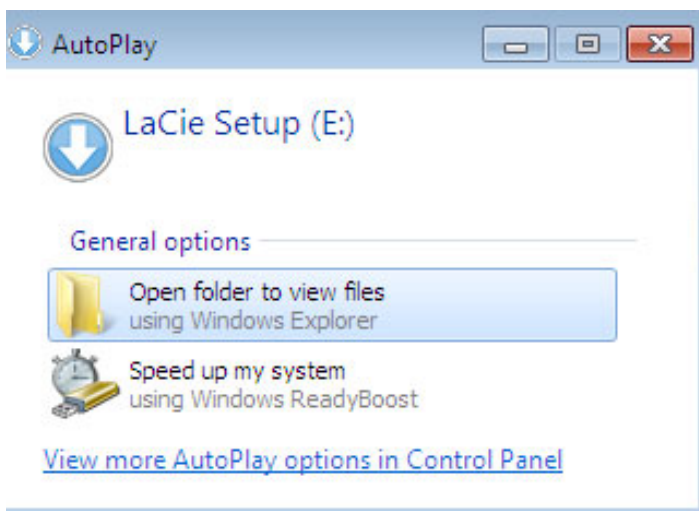
Important info regarding Mac OS X: See [help](#) for instructions.

Open the **LACIE SETUP** volume on your desktop and then double-click **LaCie Setup**

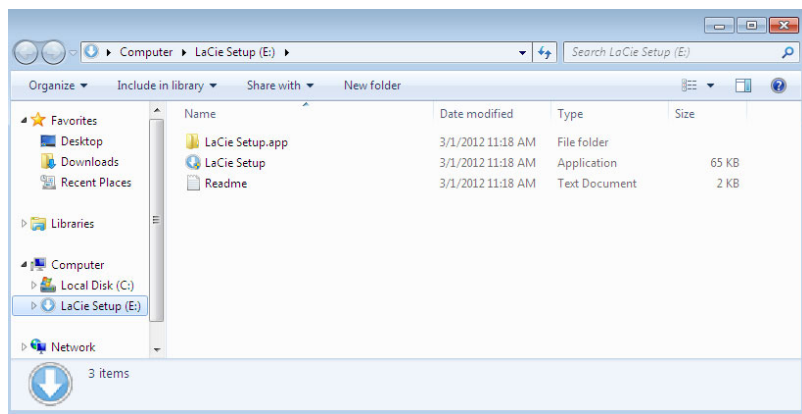


Windows users

AutoPlay: Windows AutoPlay may detect your LaCie hard drive as soon as it is connected to your computer. If the AutoPlay window appears, choose on **Open folder to view files using Windows Explorer** and double-click **LaCie Setup**.



Manual access: Open the **LACIE SETUP** volume in **Computer (My Computer** for Windows XP) and double-click **LaCie Setup**.



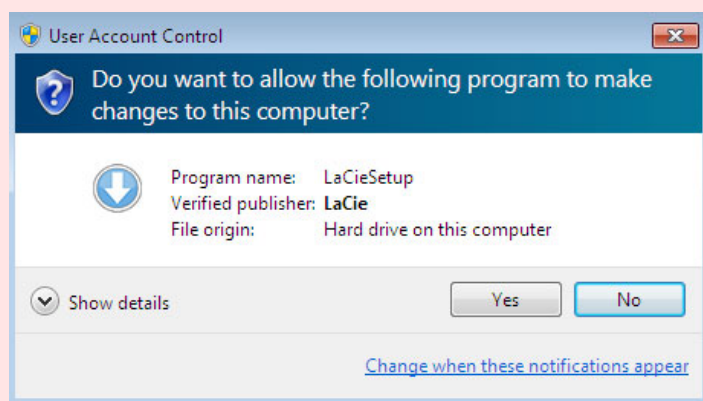
Setup

LaCie Setup Assistant does not prevent you from using your computer's native disk utility program to format or partition your LaCie drive. Simply follow the Setup Assistant through completion, then use Disk Utility for Mac or Disk Management for Windows to reformat your drive.

Important info for Mac users: You may be prompted to enter your computer password to continue with LaCie Setup Assistant.

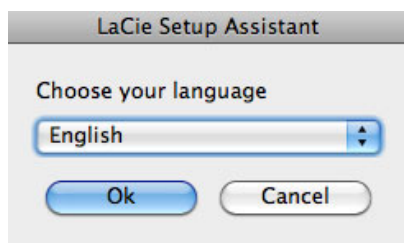
Important info regarding Mac OS X: Certain versions of LaCie Setup Assistant are not compatible with USB connections on Macintosh computers running Mac OS X 10.11, also known as El Capitan. If LaCie Setup Assistant experiences problems, you can try connecting your LaCie storage using another interface port on your computer (e.g. FireWire 800 or Thunderbolt). If you are unable to use another interface port, format your LaCie hard drive using Disk Utility. For instructions on how to format your LaCie hard drive for Mac, see the chapter **Formatting and Partitioning > Mac Users**.

Important info for Windows users: While running LaCie Setup Assistant, generic pop-up windows may ask if you wish to change your computer's settings. This is a normal request when formatting a disk or installing certain software, such as Genie Timeline. To successfully complete LaCie Setup Assistant, LaCie recommends that you agree to change the settings.

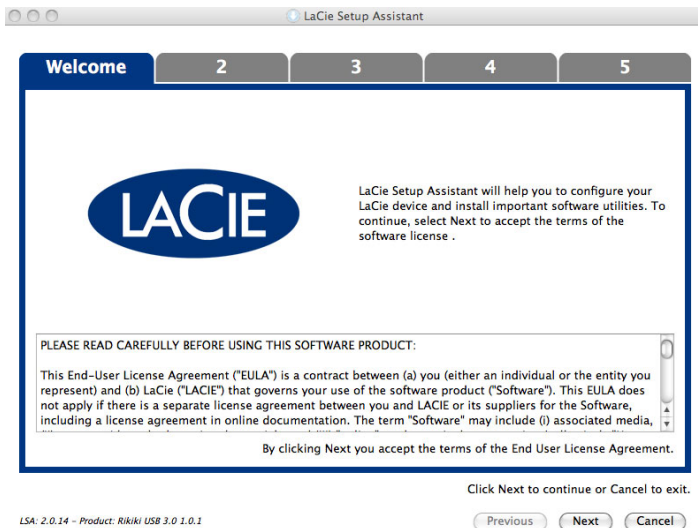


Follow the on-screen instructions as listed below to format your drive and install software utilities:

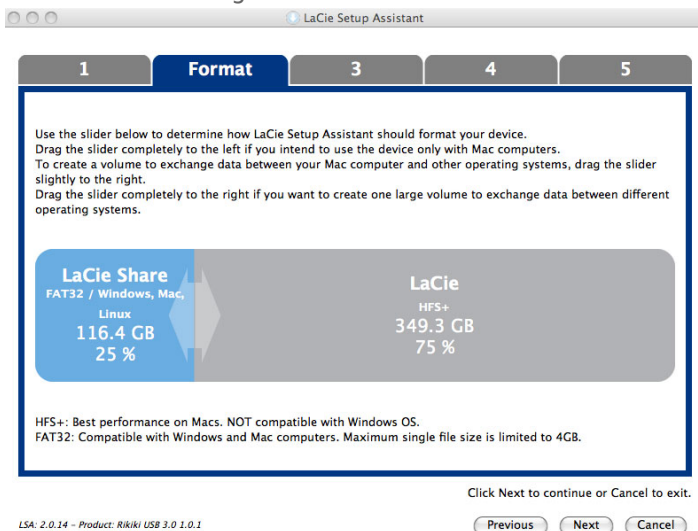
1. Select your language.



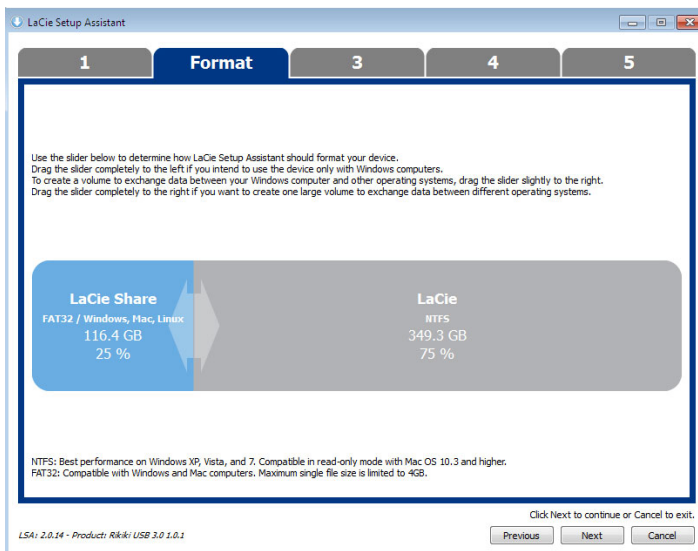
2. Please read the license agreement before choosing **Next**. Selecting **Next** confirms that you accept the license agreement.



- Use the slider to partition your LaCie hard drive. Moving the slider to the left will reduce the size of the **Compatible** volume (called **LaCie Share** on some products) (for Windows and Mac). If you do not want the **Compatible** / **LaCie Share** volume, move the slider all the way to the left. The LaCie volume will be formatted for your operating system, HFS+ for Mac or NTFS for Windows. Once you have made your selection, choose **Next** to begin the format.

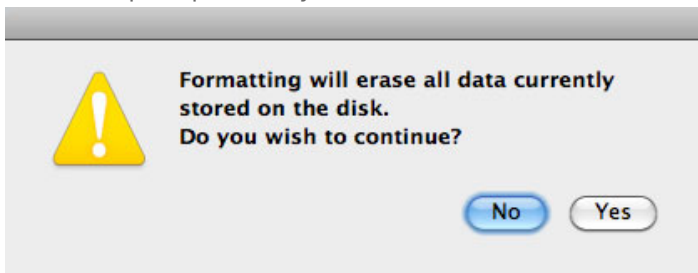


Mac

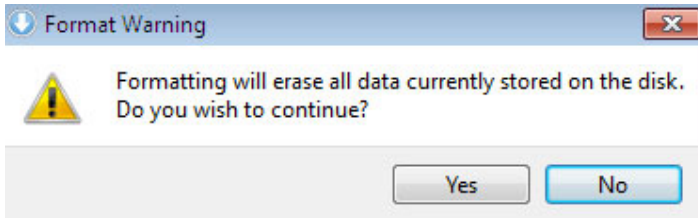


Windows

4. A window prompt alerts you that the disk will be formatted. Select **Yes** to continue.

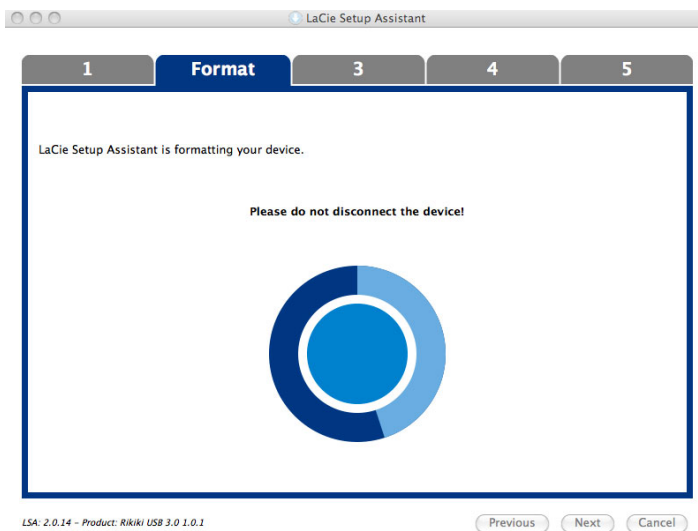


Mac



Windows

5. LaCie Setup Assistant will format the hard drive.



6. Register your LaCie device. Choose **Next** to continue.

A screenshot of the LaCie Setup Assistant window at the "Register" step. The title bar says "LaCie Setup Assistant". The progress bar at the top shows steps 1, 2, 3 (labeled "Register"), 4, and 5. The main area is titled "Why register your product?" and lists three bullet points: "Activate your warranty", "Receive FREE fast support responses", and "Get email updates and exclusive offers". Below this is the text "To register your LaCie device, please create an account or use an existing account." and a checkbox "I already have a LaCie account." which is unchecked. Below the checkbox are input fields for "First name:" (containing "John"), "Last name:" (containing "Smith"), "Email:" (containing "jsmith@email.com"), "Password:" (containing "*****"), and "Confirm password:" (containing "*****"). Below these is the "LaCie product:" section with a "Serial number:" field (containing "123456789") and a link "Where is my Serial Number?". At the bottom right is a checkbox "I do not want to register my product now." which is unchecked. At the bottom left, it says "LSA: 2.0.14 - Product: Rikiki USB 3.0 1.0.1". At the bottom right are buttons for "Previous", "Next", and "Cancel".

New Account

Existing Account

7. Choose the software utilities that you want to install. Please note that certain software utilities may begin to install before LaCie Setup Assistant has finished. Follow the software utility installer before completing LaCie Setup Assistant.
8. Choose **Next** to continue.
9. LaCie Setup Assistant provides a summary of the installation. Choose **Finish** to close the program. Your LaCie hard drive is now ready for use.

Software will be installed on the product's storage, not on your computer. It will be located on the volume entitled "Compatible" or "LaCie Share" if it exists, otherwise on "LaCie".

LaCie software utilities may be installed at any time. Once the format is complete, the LaCie Setup Assistant application will be available on:

- LaCie: if you created one partition
- Compatible/LaCie Share: if you created two partitions

To install the software utilities, simply launch LaCie Setup Assistant and follow the steps listed above.